

CITY

AS A COMMUNITY  
BY THE THE GOSPEL  
FOR THE CITY

CHURCH

Saint

PETE

ASSOCIATE PASTOR  
SEARCH PACKET  
DECEMBER 2022

LOCATED AT THE AMC MOVIE THEATRE  
IN THE SUNDIAL CENTER  
IN DOWNTOWN ST PETERSBURG, FL

---

PAGE 3

# Our HISTORY

---

CONTENTS  
OF THIS PASTORAL  
SEARCH PACKET

PAGES 4-5

## ABOUT Saint PETERSBURG

---

PAGE 6

## Candidate PROFILE

---

PAGE 7

## QUESTIONNAIRE

---

# Our History

**P**astor Justin Woodall is a native of the Tampa Bay area and always had a heart for the City of Saint Petersburg. After serving in PCA churches in Florida and South Carolina, Justin was called by Westtown Presbyterian (a Tampa church and member of the Southwest Florida Presbytery) to plant a church in downtown Saint Petersburg.

## 2015

Justin and Angie (his wife) began their ministry in St. Pete. They spent two years prayerfully establishing the first fruits of a church by seeking local support, building relationships, and meeting with families in their living room. City Church began meeting formally on Sunday evenings at a coffee shop—the The Campus Grind at University of South Florida St. Pete—where we hosted small gatherings, bible studies and kids lessons.

## 2017

We celebrated our first Sunday morning service in 2017, on the third floor of a former call center downtown. Along with a formal service, we expanded kids ministry, with a dedicated room each for nursery, toddlers and school-aged kids. We also began serving cold brew coffee and kombucha from our kegerator—a classic St. Pete experience that we proudly still offer today.

## 2019 + 2020

The Lord blessed us with increased attendance on Sunday mornings. As we grew, we transitioned to the AMC Sundial Theatre downtown for more space. After a few months operating out of a single theater, we signed a lease that gave us sole occupancy of an entire wing and 7 auditoriums, where we still worship today. During the early months of the pandemic, we live-streamed out of Webb's City Cellar at Green Bench Brewing, and in November 2020, we returned to the theatre.

## 2021

City Church Saint Petersburg became a particularized church in the Southwest Florida Presbytery on May 23, 2021. Today, we offer a variety of ministries devoted to children, women and service to our community and city. Bible studies, City Groups, Discipleship Groups, and social events provide opportunities for us to experience the gospel of Jesus Christ in community in St. Pete.

**CITY CHURCH IS LOCATED IN THE HEART  
OF ST. PETERSBURG'S DOWNTOWN CORE.  
NO LONGER THE SLEEPY RETIREMENT TOWN  
ONCE NICKNAMED "GOD'S WAITING ROOM,"  
ST. PETERSBURG HAS SEEN AN AMAZING  
RENAISSANCE OVER THE PAST 25 YEARS.**

THE SUNDIAL AMC THEATRE,  
WHERE CITY CHURCH ST PETE  
MEETS EVERY SUNDAY

## About St. Pete

With a current city population of 265,000 people, we're part of the greater Tampa Bay area which is home to over 3 million. While we're the 5th largest city in Florida, St. Pete exudes a walkable, smaller town feel, where bumping into neighbors or making friends of strangers is commonplace.





**1** **D**owntown St. Pete runs along the waters of Tampa Bay. On the city's west side are the beaches on the Gulf of Mexico. We average 361 days of sunshine a year and have earned the nickname the Sunshine City.

St. Pete has the third largest waterfront park system in the U.S. It's a point of pride that some of our most beautiful assets are publicly-owned green spaces. We have over 6 world-class museums (including [the Dali](#), Museum of Fine Arts, and Chihuly Glass Collection). The Florida Orchestra is based here, as is the St. Pete Opera, and several theaters. St. Pete is also home to several live music venues and performance halls. All of these combine to make us truly a city of the arts.

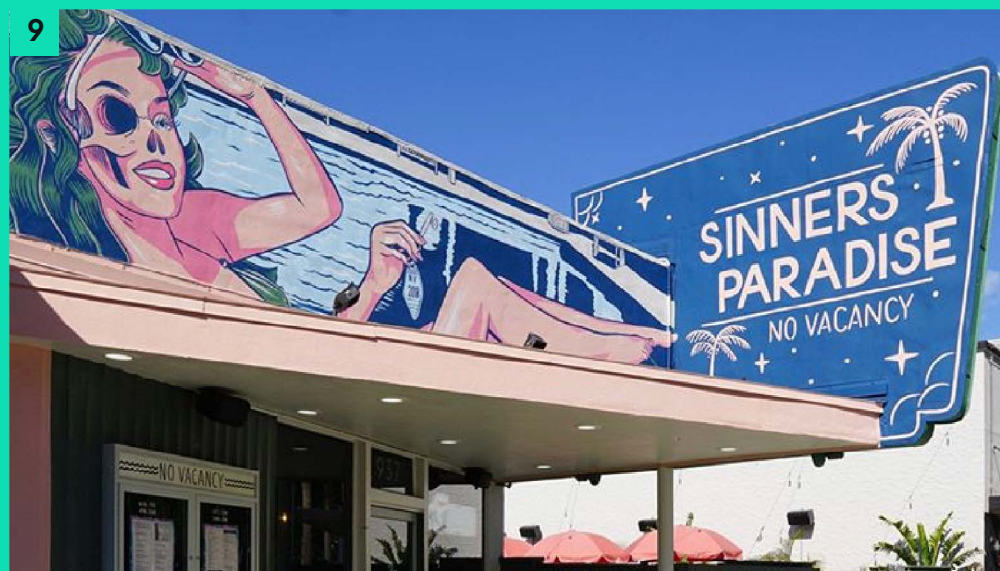
We also have many local makers and artists, [the Shine Mural Festival](#), a huge collection of independently-owned small businesses, seasonal markets, and over 300 festivals/public events per year. Home to [the Tampa Bay Rays](#), the Tampa Bay Rowdies, and the annual Firestone Grand Prix Indy Street Race, there is truly something for everyone here.

As a city in the south, St. Pete has [a history of segregation and racial disparity](#) that, as a community, we're still reconciling with today.





9



However, we are a [beautifully diverse city](#) with both younger and older generations. St. Pete is approximately 68% white, 24% African-American and 6.5% Hispanic.

As our city has become more popular, we are now dealing with the rising price of housing and commercial rents/valuations that are beginning to affect the make-up of our community. While there's an abundance of wealth here, 13.3% of our residents live at or [below the poverty line](#).

We're home to more than 100 formally recognized neighborhoods, and our downtown core continues to add more dense residential options. The median age of our residents is around 41.6 years old, and while Pinellas County is split almost equally between Democrats and Republicans, the City of St. Pete leans more [heavily Democrat](#).

St. Pete is also one of the [least churchied cities in the United States](#), where only 35.9% of the population considers themselves "religious", giving us an amazing opportunity to help spread the gospel and the love of Jesus Christ to our neighbors.

**CITY CHURCH St. PETE**

8



7



In summary, [the city of St. Petersburg](#) is filled with diverse residents that are truly passionate and engaged in the arts, culture, neighborhoods, social issues, and politics. It's our hope that we may help in filling them with passion for the Lord.

[ilovetheburg.com](http://ilovetheburg.com)  
[stpete.org](http://stpete.org)

6



10



6



## Candidate Profile

Our Assistant/Associate Pastor (AP) will deeply love people, whether it is members of his family, City Church, or the community. He will be adaptable, energetic, and enjoy working in teams with the Lead Pastor. Ultimately, he will help equip City Church to reveal the love of Jesus Christ during this time.

Among other duties, the AP will focus on three key areas:

- 1 **PREACHING + TEACHING**
- 2 **CHRISTIAN EDUCATION**
- 3 **MEN'S MINISTRY**

These responsibilities will adjust as needed.

The AP will shepherd the congregation through preaching (about 12 times a year), counseling, discipleship, team building and classroom instruction.

Specifically, you will be known for:

### GOOD CHARACTER

1\_You love God, his Word, and his People; others would say the same.

2\_You are other-centered, self-aware, teachable, and seeking to grow in your journey with Jesus Christ.

3\_You are curious about people and love discovering their hopes and fears, joys and sorrows, so you can help them find God's work in their lives.

4\_If married, you love your spouse as Christ loves his church. If not, you demonstrate the same self-sacrificial approach in your relationships with others.

### GOOD PREACHING + TEACHING

1\_You preach accurately, lovingly, and with authority.

2\_You show how all Scripture unites into a single story that leads to Jesus Christ.

3\_You teach in ways that engage and focus attention.

### NOTE

The AP must be ordained or ordainable in the Presbyterian Church of America (PCA).

### GOOD LEADERSHIP

1\_You can explain where we are, where we need to go, and how to get there.

2\_You can collaborate to create progress and change.

3\_You can develop and nurture volunteers and leaders.

4\_You can gain the trust of people, whether staff, congregation, or the community.

5\_You can bring out the best in others.

# Questionnaire

THANK YOU FOR YOUR INTEREST IN  
THIS POSITION—WE PRAY THAT GOD MAY  
GUIDE YOUR SEARCH AND OURS



When you are ready to apply, please send

your Resume and MDF along with your answers to the Questionnaire as a PDF to [pastorsearch@citychurchstpete.org](mailto:pastorsearch@citychurchstpete.org)

1\_ Tell us about your strengths. **How about areas you would like to grow in?**

2\_ What makes this opportunity at City Church attractive to you?

3\_ What can you tell us about your preaching experience?

4\_ What is the best sermon you have ever heard? **Who gave it, and what made it so compelling?**

5\_ What are your favorite musical groups and why?

6\_ What do you enjoy doing in your free time when you're not working?

7\_ Besides Jesus, who has been the most influential person in your life?

8\_ What strengths or weaknesses do you see in a church meeting in a movie theatre, if any?

9\_ What is your vision for a healthy men's ministry?

10\_ Florida is a highly politicized state. **What role should politics play in a Sunday sermon, if any?**

11\_ St. Petersburg hosts one of the largest Pride celebrations in the country. Consider the following hypothetical scenario: **On social media, you happen to see some church members celebrating and participating in Pride festivities.** What would your response be, if any?

12\_ Consider the following hypothetical scenario: **There is a vocal minority seeding frustrations and complaints with other members of the church and it's creating larger issues.** What would your response be, if any?