



DaySpring

Presbyterian

Church

Pastoral

Candidate

Packet

DaySpring Presbyterian Church Pastoral Candidate Packet and Church Profile

Table of Contents

Table of Contents	1
Mission, Vision, & Core Values	2
Church History	3
Ministries	4
Sunday Services	5
Distinctives	6
Areas of Growth	7
Location	8
Finances	9
Facilities	10
Church Demographics	10
Staff & Officers	12
Pastor Profile	13

Mission, Vision, & Core Values

Throughout the Church's history, Christians have summarized in numerous creeds and confessions what scripture teaches about who God is and what God requires of us. Recognizing that we are not the first Christians to open the Bible and try to make sense of it, we are therefore a confessional church, standing on the shoulders of those who've gone before us.

The authority of the Scriptures, the emphasis on God's grace, the centrality of the person and work of Jesus Christ, and the ministry of the Church are some of our vital doctrinal commitments.

DaySpring is a member congregation of the Presbyterian Church in America, and part of the Chesapeake Presbytery. While we are connected with a large body of sister congregations, on the local level, we work to express these essential beliefs in ways that our community can understand and embrace.

DaySpring's core values can be summed up in three phrases: Authentic community, Missional living, and Gospel transformation.

Authentic community: In a world of disconnection, DaySpring seeks to be a place of unusual devotion to one another and to our Lord.

Missional living: In a world of self-absorption, DaySpring seeks to bless our community and our world with deeds of compassion, mercy, and grace.

Gospel transformation: In a world of brokenness, DaySpring seeks to be a place where hearts and homes are transformed and healed by the gospel of grace.

DaySpring is a COME AS YOU ARE kind of church – a community of imperfect people doing life together, helping each other to flourish and to become all that God created us to be...a place where everyone is welcome. We are a community of people who are "in process." We have imperfect, messy lives, but together we're pursuing and experiencing a transformative relationship with Jesus and with one another. He, more than anyone, knows that life is challenging, and his church is to be a place filled with friends who spur one another on with truth, love, and good deeds.



We are a diverse community of people, united by a faith that brings understanding and grace to our divided world, who together pursue the value we call authentic community. We don't care what kind of flip-flops you wear, what doubts or questions you have, or even how messed up you think your life might be...We have a place for you. So, whether you've had a relationship with God for years or you're not even sure God exists, come as you are. Bring your questions; bring your doubts, your fears, and your hurts. Come as you are, because pretending just keeps us stuck.

We believe that we are all created to live life to its fullest, and that means relationally connecting with others. We do this primarily through our fellowship groups that are the very heart of DaySpring and are how we pursue the value we call to “be transformed.” Nobody stumbles into spiritual maturity, and knowing that to be true, the aim of our fellowship groups is to intentionally pursue spiritual maturity and a deepening relationship with Jesus that naturally leads to missional living and ministering together to the community outside of DaySpring. All of this happens in a small community of people who are eager to pursue the same transformation and who in time become some of the closest relationships you’ve ever had. We have groups that meet throughout the week, including men’s groups, women’s groups, and a group or two for everyone. Some of our groups also have the option of joining virtually via Zoom.

So often, we’re not even sure where or how to begin to make changes. We need more than a self-help program where we muscle through a list of rules. In order to flourish, to be all God created us to be, we need real, lasting change. We need to be transformed. Transformation is change not from the outside in, but from the inside out, and it happens when we connect with Jesus and others. And in our world of brokenness, DaySpring hopes to be a place where hearts and homes are transformed and healed by the love of God. Our fellowship groups provide a safe space for authentic transformation to occur in and through encouraging relationships. Being part of a community where we can be intentional about our spiritual growth is going to make all the difference in our spiritual journey. We believe that transformation happens best as we seek to grow in our relationship with Jesus together. Our aim in our fellowship groups is to have real and honest conversations as we study the Bible together, all while becoming increasingly known by others who will help us live out what we learn.

Gospel transformation, pursued in authentic community, leads to our pursuit of the value we call missional living -- ministering together to the community outside of DaySpring and to the world with deeds of compassion, mercy, and grace. The third paragraph of the Church History section below speaks to some past examples of how DaySpring has pursued missional living.

Church History

DaySpring Presbyterian Church started on May 27, 2003. This church plant was the result of the vision of the Chesapeake Presbytery and the combined efforts of three different Presbyterian churches (Severna Park, Severn Run, and Grace Presbyterian churches) who collaborated to provide elder leadership and the pastoral care of Mike Horrigan, who planted DaySpring and is its current pastor. The original Sunday morning location was at the Maritime Institute, and was quickly followed by a more permanent location at St. Christopher’s Episcopal Church in Linthicum, with an average attendance of 55 worshipers.

By April of 2008, the church became fully financially self-supporting. It had an average attendance of over 100 with many small groups. In that same year, DaySpring was particularized. It had trained its own elders, and unanimously elected its organizing pastor, Michael Horrigan, to be its first pastor.

In 2009, the church was flourishing with over 100 in attendance. Many new members and small groups were added. An ESL ministry was launched. Local ministries were run, such as vacation Bible school, Habitat for Humanity, and winter relief to the homeless in the community. DaySpring participated in a music outreach, the Tin Can Music Festival. DaySpring sent their first missionary into the field, sending a member to Peru with Mission to the World. An interning pastor, was ordained and became the senior pastor at Grace Presbyterian in Yulee, FL.

From 2010-2013, DaySpring brought on a new pastoral intern. The church continued to slowly grow and continued all its previous ministries. A vibrant young adult ministry was added to support the needs of a large and growing young adult population. The church underwent a time of stress as one member was involved in a lawsuit against the Chesapeake Presbytery and one of its churches.

In 2014-2015, DaySpring experienced a time of great turmoil and the loss of attendees. A serious marital conflict between the couple leading the young adult fellowship eventually led to church discipline and divorce. One of the sad repercussions of this conflict was a large drop in young adult members. Additionally, some ministries ended, including the ESL program and the Tin Can Music Festival. Attendance declined to approximately 75 people. On a positive note, the church sent two members to Cambodia with Mission to the World.

In 2016, Terry Pruitt was brought on as a pastoral resident, and two years later he was ordained and called as an assistant pastor. He still serves in that position to this day. The diaconal ministry team was started with both men and women, though only men were ordained.

In 2018, after many years of consideration, the church location was changed to Solley Elementary School in Glen Burnie, MD. A number of families decided against relocating with the church, and the attendance decreased to 50 weekly attendees.

In 2020, after receiving training, church members started a Good News Bible club for the children at Solley Elementary. This ministry was a success, with over 25 children attending. However, everything was put to a halt with the pandemic. With new health regulations, Solley Elementary was no longer open to outside organizations using their facilities. Dayspring continued Zoom worship and met monthly at the outside pavilion of Severn Run EP church (PCA). Even with the loss of members and the loss of a church worship location, the congregation celebrated its ability to support three local and two foreign missionaries.

After the pandemic of 2020, on April 18, 2021, DaySpring began meeting in person to worship in the parking lot of Solley United Methodist church and in June, we began worshipping in the building. With a smaller congregation of approximately 35 people, DaySpring continues to this day to offer small groups and a vibrant, caring community of believers. In 2024, DaySpring received seven new members to the congregation.

Ministries

Diaconal Ministry Team: The diaconal ministry team is a group of men (ordained) and women chosen by the congregation for their spiritual character, honesty, and compassion.

Fellowship Groups: Fellowship Groups are at the very heart of Day Spring and are how we pursue the value we call "Be Transformed." Nobody stumbles into spiritual maturity, and knowing that to be true, the aim of our Fellowship Groups is to intentionally pursue spiritual maturity and a deepening relationship with Jesus. All of this happens in a small community of people who are eager to pursue the same transformation and who in time become some of the closest relationships you've ever had. We have groups that meet throughout the week, either face-to-face in a home or virtually.

Men's Ministry: The biweekly Men's Bible Study meets Saturdays. This group studies books of the Bible.

Women's Ministry: The weekly Women's Bible Study meets every Tuesday. This group studies books of the Bible.

Children's Ministry: Sunday school is offered to all children aged 12 and below each Sunday during the service.

Young Adult Ministry (temporarily suspended): Young adults meet biweekly for fellowship and Bible study on Sunday evenings.

Worship: A praise team includes voice and instrumentalists that lead the congregation in both contemporary and traditional worship songs aligned to the content of the weekly sermon.



The technology team assists with microphones for worship and recording the service for those who need to attend in an online format.

Missions: Dayspring supports the following missions and missionaries:

- FAAST (Faith Alliance Against Slavery and Trafficking)
- Wellspring Life Ministry
- RUF-I (Reformed University Fellowship International: Johns Hopkins) Jacob Jasin
- RUF (Reformed University Fellowship: UMBC) Trip Beans
- Bert Williams: Mission to the World
- Roberta Brown: Mission to the World
- Greg Shade: Youth for Christ

Neighborhood outreach: Each member is encouraged to “love their neighbor” by embracing their neighborhood relationships and activities.

Workplace outreach: Each member is encouraged to “be a light” in their workplace by looking for ways to serve and support their coworkers and be involved in activities that support the ministry of Christ in their workplace capacity.

For more information on PCA missions, visit [Mission to the World](#) and [Mission to North America](#).

Sunday Services

DaySpring's worship service is divided into 3 cycles: Praise, Renewal, and Commitment. The description below is from a typical Sunday service, with minor variations from time to time.



Praise: We come worshiping the Lord, singing His praises with gladness.

Our worship service begins by the ruling elder on duty or assistant pastor inviting us to worship the Lord, the DaySpring from on high, through a Call to Worship that's taken from the Scriptures. The leader says one part followed by a congregational response.

After the Call to Worship, the elder of the day prays a prayer of adoration, asking God to bless our worship time and to draw near to us as we draw near to Him.

Next, we turn our hearts and minds away from everything else and towards God by singing God's praises and coming into His presence with thanksgiving. We usually sing two songs – often hymns or contemporary Christian worship songs.

Renewal: We come celebrating the beauty of forgiveness and new life.

In the Renewal cycle of the service, we come to the Lord to confess and repent of our sins. The elder on duty calls us to repentance using a "Call to Renewal" that's taken from the Scriptures. This Call to Renewal is followed by a congregational Prayer of Confession that's read responsively by the elder and the congregation. Next, as individuals, we come silently to God to confess our sins, followed by the elder reading scripture as an assurance of God's pardon. Finally, we close this segment of our worship with a Song of Renewal.

Commitment: We come committing our lives to God's service.

In the Commitment cycle of the service, we begin by professing what we believe as a congregation ("Professing our Faith") using a Reformed catechism. We have used the Westminster Catechism, the New City Catechism, and the Heidelberg Catechism. We go through one question each Sunday with the elder of the day saying some introductory words, followed by the congregation and elder reading the question and answer together.

Following the Profession of Faith, the elder on duty prays a pastoral prayer, adoring the Lord, praying for the congregation, lifting up the ministries we support, and supplicating the Lord for God's mission – the advancement of the Kingdom and His will to be done on earth as it is in heaven. The elder on duty also prays to dedicate the congregation's tithes and offerings to the Lord. Also, before the prayer begins, the children are dismissed to children's church (5th grade and under).

Next, a deacon takes up the congregational offering, and then the teaching elder opens up God's Word to the congregation in expository preaching, giving us a glimpse of God's glory in the face of Jesus Christ and challenging us to go out and love and serve the world as those who have been loved by God. Also, one Sunday per month we partake of the Lord's Supper.

After the sermon, we sing a closing song, followed by the pastoral benediction, congregational singing of a postlude, and then the pastor's dismissal.

Distinctives

"May the God of endurance and encouragement grant you to live in such harmony with one another, in accord with Christ Jesus, that together you may with one voice glorify the God

and Father of our Lord Jesus Christ. Therefore, welcome one another as Christ has welcomed you, for the glory of God.” - Romans 15:5-7

The community of DaySpring is a small, tight-knit church that is very welcoming and actively looks for ways for people to contribute meaningfully to the life of the church, and fosters a caring environment where we bear one another's burdens in love. However, the small congregation faces many perceived challenges on account of its size. The workers are few, yet those few, in their heart of service to the Lord, can do great things to build the body of Christ.



One of DaySpring's core values states that we seek to be a place of "unusual devotion" to the Lord. Through that comes an unusual devotion to one another as beings created in God's image. In our congregation, we strive to invite all to take part in an authentic Christian community with people who share very close fellowship, inside and outside the church, in the Spirit of the Word.

Highlighting this sense of internal community is the breadth and depth of our small group Bible study ministry that reaches beyond the bounds of our current church membership. These ministries at DaySpring are what they are today because of our desire to grow in faith together with those inside and outside of our immediate church body.

We also fervently practice being instruments of God's grace to those around us within DaySpring and in our community. We are then able to be a church that promotes meaningful connections to keep our brothers and sisters in Christ walking with the LORD and to be effective witnesses to those outside the church. The sum of the parts of our individual members translates to a desire to reach the heart of the person. If we are to encourage, and change hearts in Christ, we as a congregation recognize we must first get to know those hearts. It is here that DaySpring finds its strength: through the trust, and the openness we have in one another, we always know there is an abundance of riches at our disposal should we be wanting for anything in the course of our walk through life.

There is a desire to transform hearts who are hurting or searching for solace through the grace we know in Christ in our caring for one another and in the ministries we support. This is our witness to others. Those from all walks of life are welcome, and we believe this is evidenced by the walks of life taken by those who have come together to form our church body. No matter who you are, DaySpring is a place where you can witness the impact of Christian community on practical living in plain sight.

"No one after lighting a lamp covers it with a jar or puts it under a bed, but puts it on a stand, so that those who enter may see the light." - Luke 6:16

Areas of Growth

Emerging from the height of the COVID pandemic, we as a congregation have found a need to take stock of our ministry positions both inside and outside the church. We have been fortunate to have found a place to worship in our current building, though we hope to eventually have a space of our own to further grow our ministry.

To that point, we have also been fortunate to have welcomed new families and individuals over the last year and a half who have quickly become integral parts of our church

community. Given this, a key point of discussion for us currently is to reassess our church body, looking for ways to better employ the gifts of our members to the service of the kingdom of God. Many needs exist in the surrounding community, and we are prayerfully considering our potential roles in reaching them as an avenue to display God's grace.

Alongside that, we are also striving to increase the visibility of our church online to make it easier for others to find and engage with us.

In the past, our music ministry carried a special significance in the life of our church, and that is something that we wish to revive.

Location

DaySpring sits in a unique area. The church facility is in Glen Burnie, but near the border of Pasadena. Baltimore is just to the north of the church, and Annapolis, the capital of Maryland, is about 20 miles to the south. Washington D.C. is about 40 miles away from the church. Both Glen Burnie and Pasadena are unincorporated cities in Anne Arundel County, and Glen Burnie's population is approximately 73,000 people and Pasadena's is 33,000. Due to its location, while some members of the church do live in the immediate area of the church, others live farther away, even in Howard County, driving around 30 minutes to attend church.

The current building we are using is on the edge of a much older section of the Glen Burnie/Pasadena area and new housing developments. The oldest development, Tanyard Springs, began in 2009. Since Tanyard Springs has been built, three other communities have been established, the latest of which is Tanyard Shores, which had its first homes built in 2020 and still has houses under construction. In addition, one other community, Tanyard Cove, is adding additional houses to their already established community. Another unique aspect of the area regarding housing is, thanks to Glen Burnie and Pasadena's proximity to the Patapsco River and many of its tributaries, the large number of waterfront houses or communities with water access. These houses can range in size from a small ranch style home to a mansion and, at times, can sit right next to each other, depending on the community. The water access is indicative of the average price of homes. Currently, the average price for a house in Glen Burnie is \$371,000 and for Pasadena, which has more waterfront houses, is \$430,000.

Given the location of the church, and its proximity to multiple cities, people work for a vast number of employers. It is not unusual to find people who commute into Washington D.C. to work for the federal government or an adjacent company. Being close to Annapolis means that the state government is also a large employer in the area. There are also several large hospitals (Walter Reed National Military Center, Johns Hopkins Hospital, and the Baltimore Washington Medical Center, to name a few) and universities (e.g., Johns Hopkins University, the University of Maryland, the University of Maryland Baltimore, Notre Dame of Maryland University, Anne Arundel County College, the Naval Academy) within easy commuting distance between DC, Annapolis, and Baltimore. There are eleven military bases within Maryland, all of which are within commuting distance of the church, the largest being Fort George G. Meade, which houses the National Security Agency, the Defense Information System Agency, and the U.S. Cyber Command. These not only employ soldiers and civilian employees, but also military contractors. The closest installation to the church is the Coast Guard Yard at Curtis Creek, which is about three miles from the building. There is also an Amazon distribution facility right down the road from the church building.

The location of the church also means there are a variety of schools for a person to choose from, depending on their needs or desires for education. Between Pasadena and Glen Burnie alone are 17 Anne Arundel County public elementary schools, including Solley

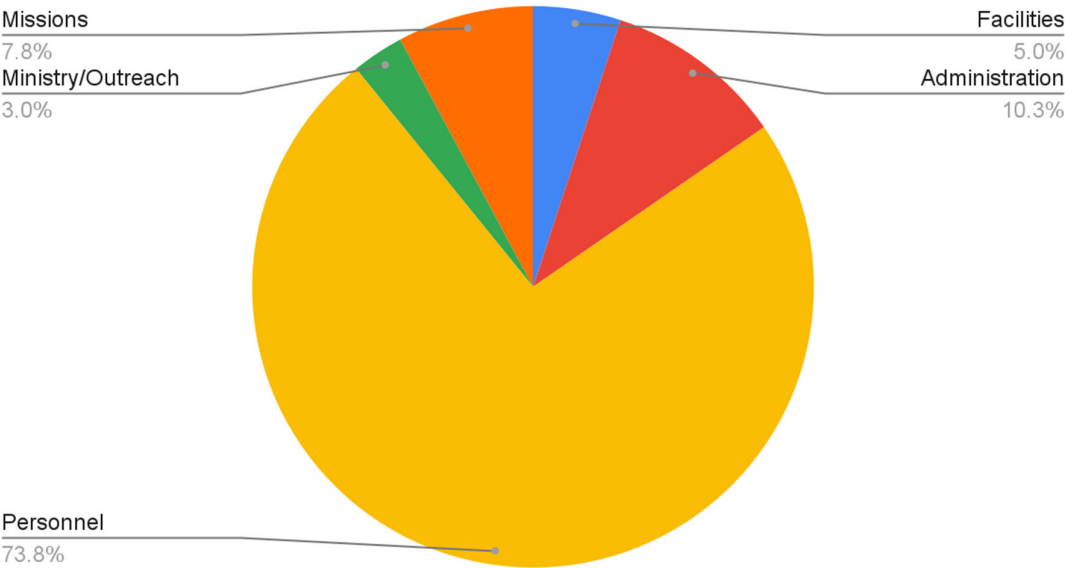
Elementary School, which is right next door to the current building, and in the entire county there are around 80 elementary schools. There are four Anne Arundel County public middle schools between the two cities and four high schools for the county. Many individuals choose to live in Severna Park or in Howard County though, for the school systems and their high rankings. Beyond the public school system, there are a number of private schools, including Christian schools.

The region recently suffered a huge tragedy that greatly affected the area as well as traffic. The Key Bridge, which collapsed when a ship collided with it, sat three miles from the church building. The reports have said that it will most likely take several years to replace the bridge. Until the bridge is replaced, the Baltimore Beltway (I-695) now ends on the outer loop at Exit 1 - Hawkins Point, the closest exit to the church. There are two tunnels that go under the Patapsco River; however, when there is an accident in one of the tunnels, it disrupts traffic for the entire area.

DaySpring is a part of the Chesapeake Presbytery. This Presbytery serves the Baltimore and Annapolis areas of Maryland, and consists of 36 churches. While DaySpring is a small church, being a part of this Presbytery allows it to share resources with surrounding churches, which include various youth groups and activities.

Finances

DaySpring Financial Breakdown



Facilities

DaySpring meets at 11:00 am every Sunday morning at: 7600 Solley Rd., Glen Burnie, MD 21060.

DaySpring's current meeting location is maintained and managed by Solley United Methodist Church, who are extremely charitable with the use of their facility. The building has a sanctuary on the main level. There is an open space in the basement that is used as a fellowship hall and children's church area. There are two bathrooms. There is also a cinder block building in the back that is another large space for gathering but is not used by our congregation on a regular basis. Unfortunately, the building is not ADA compliant, but it does have A/C. There is a small amount of on-site parking, with additional parking available at the adjacent elementary school. There is a shady garden and picnic area as well.



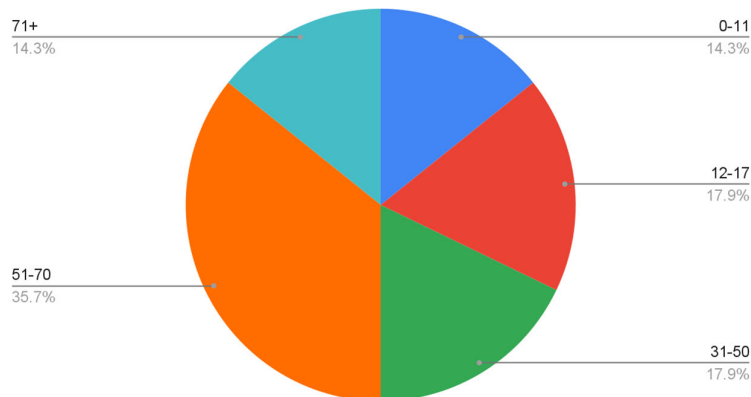
The church has a trailer that is used for storage and transporting equipment as needed.

Church Demographics

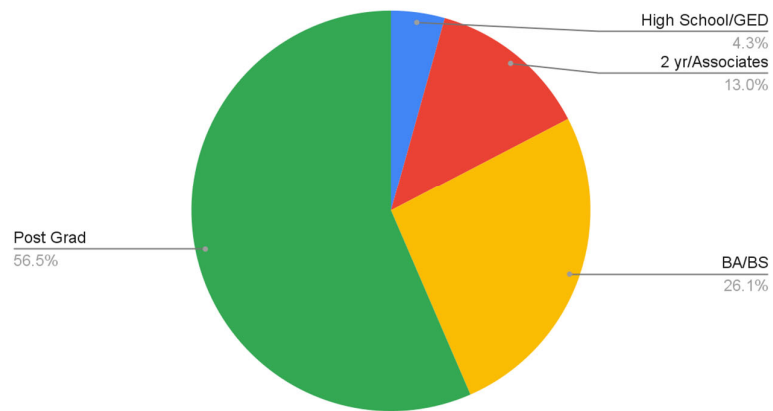
DaySpring by the numbers:

- 13 - Households who regularly attend
- 25 - Number of adults who attend
- 9 - Number of children attending

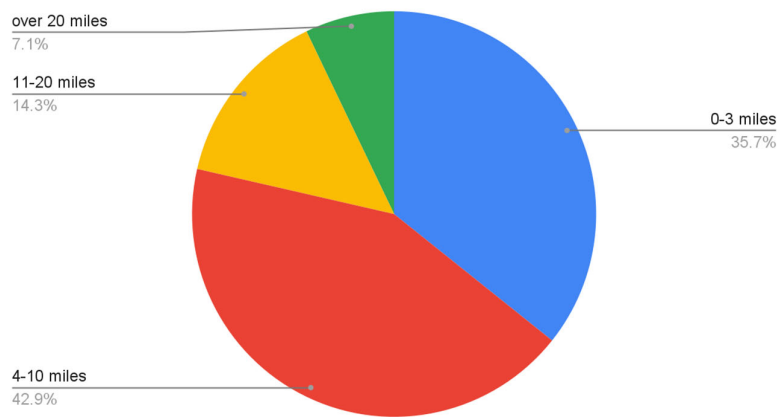
Age of Attendees



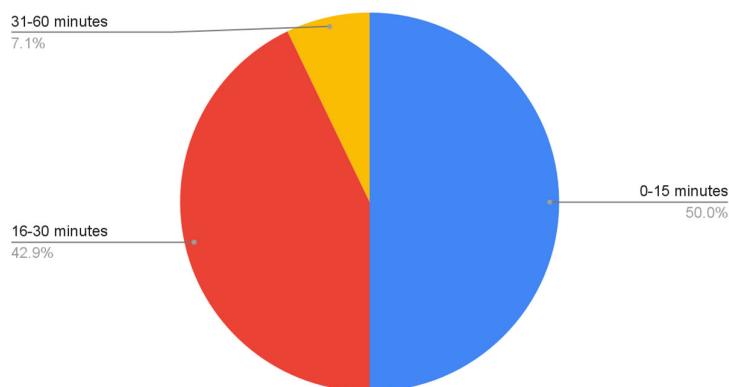
Attendee Educational Level



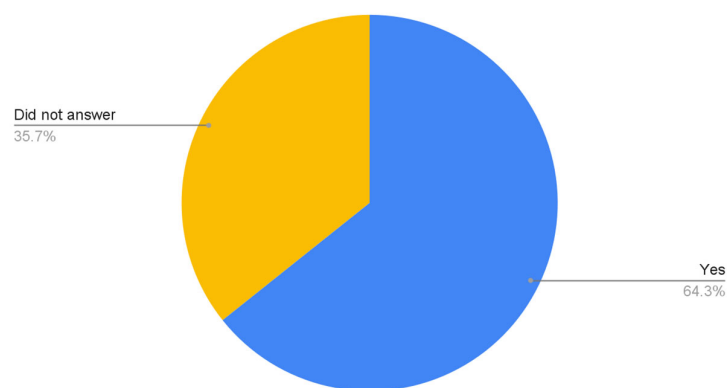
Distance from Home to Church



Travel Time to Church



Families that have Attended Online



Staff & Officers

DaySpring has a senior pastor who is compensated and an assistant pastor who is a tentmaker. Both of these men are ordained as teaching elders in the Chesapeake Presbytery (PCA). The senior pastor has announced his plans to retire upon the installation of the new pastor.

The session of DaySpring consists of men who are ordained as ruling elders. Currently, it has three active ruling elders.

We have a diaconal ministry team that is made up of an ordained deacon and a commissioned deaconess. There is a treasurer as well.

There is also a children's ministry coordinator. This is an unpaid position that oversees a team of volunteers.

Pastor Profile

The congregation of DaySpring Presbyterian Church in Glen Burnie, Maryland, is searching for a pastoral candidate with ministerial experience to lead an established church by shepherding our fellowship in God's ministries. We are seeking a man of God who is ordained, or can be ordained, in the Presbyterian Church of America. We seek a man who has the following qualities and abilities:

Preaching: We would like an individual who primarily does expository preaching of the Bible. Who believes that learning from both the Old and New Testaments is equally valuable and that both should be preached. He not only understands that we are all sinful beings, but God is a sovereign God, and it is only His saving grace that saves us and changes even the most sinful person. We would like an individual who can effectively communicate that saving grace both in sermons and in daily life.

Relational: We desire a person who values each individual, regardless of gender, educational level, disability/ability, race, or identity, and is able to interact with others easily and with loving care. We seek someone who serves as an example of how to love your neighbor in the congregation and community. We seek someone who can counsel and guide members of the congregation with care, compassion, and wisdom, and is reflective of Jesus' heart and love.

A Humble Leader: We pray that our next pastor will be an effective leader. One who leads and guides with wisdom and grace. Who does not rush to judgements, but takes time to pray, consult, and think completely about a problem or issue. This individual should be able to admit publicly when he is wrong or has hurt another person, and ask for forgiveness when he has sinned or erred. We seek one who sees the value in unity, especially in the Session and the congregation.

Visionary: We desire a man whose heart is to grow the hearts, minds, and souls of the congregation closer to Jesus Christ. This man should also have an aspiration to minister to the neighboring communities and area in a way that is a faithful witness to Christ.

Meets the qualifications set forth in 1 Timothy 3:1-7 and Titus 1:5-9:

- Leads and works collaboratively with the Session, respecting their authority and input and fostering a spirit of unity and trust among them.
- Is aware of his own strengths and weaknesses, demonstrating approachability and authenticity.
- Plans strategically for the future of the church, setting realistic and attainable goals and objectives, and communicates his vision clearly to the congregation.
- Recognizes and helps develop the gifts and talents of others and encourages them to discover and fulfill their calling and purpose in life.
- Has excellent communication skills, both verbal and non-verbal. Knows when to speak and when to listen; when to ask questions and when to give advice; when to confront issues and when to let them go; and when to bring in others for consultation or assistance.

The current pastor's preparation for Sunday service includes sermon preparation, preparing the order of Sunday worship, and preparing music for the Sunday service.

For more information or to apply, please send your resume with a reference list to dayspringpulpitsearch@gmail.com. We would welcome, but it is not required, a link to a sermon and personal website as well (if you have it).