

**Church Profile –  
New City Church (Palm Bay, Florida)**

Dear Candidate,

On behalf of our congregation, we thank God for you and your interest in the Pastor position at New City Church (PCA) located in Palm Bay, Florida. We hope that this profile will give you an understanding of our community, our congregation, and the vision that unites us.

We are looking for a preacher who will boldly proclaim the Word of God, a shepherd who desires to actively care for his flock, and a leader with a heart for discipling our staff and ministry leaders. We also desire a leader who will train up men to be elders and deacons in our church.

We invite you to read through this profile and discover who we are as a congregation, and how the Holy Spirit is present among us in the many ministries through which we serve our church, community, and world.

If you feel a calling to New City Church (NCC) and would like to be considered for the Pastor position, please apply via [McGowan Global Institute \(MGI\)](#). Your application will include the following:

- Résumé
- References (3-5, professional and personal)
- Ministerial Data Form
- Links to a few of your sermons
- A brief biography of you and your family

We are in continual prayer for God's will to be done in our selection process. Our congregation eagerly awaits meeting the man God has called to serve as the Pastor at NCC. We are humbled by your interest and look forward to hearing from you.

In Christ,

### **NCC Pastor Search Committee**

(Lto R): Zack Newhouse, Ryan Shelley (Chairman), Gina Bolen, Jon Storck (Consultant), McCartney Diener (Secretary), Penny Woodmansee, David Brangwin (Vice-Chairman), Ken Ingraham, Kathy Welch



# Table of Contents

- [PASTOR QUALIFICATIONS](#) 3
- [PASTOR PROFILE AND RESPONSIBILITIES](#) 3
  - [Pastoral Care](#) 3
  - [Congregational Fellowship](#) 3
  - [Administrative Leadership](#) 4
  - [Spiritual Development & Discipleship Training](#) 4
- [NEW CITY'S STORY](#) 5
  - [Who We Are](#) 5
  - [Church History](#) 5
  - [Worship Style](#) 5
  - [Staff](#) 6
  - [Officers](#) 6
  - [Opportunities for Growth](#) 7
- [NEW CITY'S COMMITMENTS \(What We Believe\)](#) 8
- [SCOPE OF MINISTRIES, PARTICIPATION & ENGAGEMENT](#) 9
- [WHERE WE ARE LOCATED](#) 10

## PASTOR QUALIFICATIONS

We are seeking a Pastor whose life and ministry demonstrate the qualifications for elders listed in 1 Timothy 3:1-7 and Titus 1:6-9. Our congregation's desire is for our leadership to continue New City's history of solid Biblical teaching while graciously unifying our congregation as we grow in our love for God and service to His kingdom.

- MDiv (Master of Divinity)
- 3+ Years Church Ministry
- Experience in church planting is preferred but not necessary
- Ordained or ordainable in the PCA
- Doctrinally sound; in accordance with the Westminster Standards
- Experienced in the application of The Book of Church Order
- Approachable and caring personality
- Communicates well with people of all ages and backgrounds
- Mission-oriented with a desire to spread the gospel both locally and globally
- Exhibits a Visionary Leadership style during ideation and decision-making
- Optimistic and inspirational to others when interacting with teams
- Proven Servant Leader with a heart for shepherding

## PASTOR PROFILE AND RESPONSIBILITIES

### **Pastoral Care**

- Provide regular shepherding, comfort, and counsel to individuals in the congregation
- Collaborate with church leaders, ministry leaders, and congregants to develop and deploy a coordinated and unified strategy to address needs in the congregation
- Provide counsel from the Word of God and build relationships with external counseling providers who can provide specialized counseling as needs arise
- Share responsibility with the ministry teams for hospital, sick, hospice, and shut-in visits, as well as calling on inactive members

### **Congregational Fellowship**

- Develop close relationships with members of the congregation
- Facilitate intergenerational fellowship among members through various congregational activities
- Encourage participation in established and new City Groups

## **Administrative Leadership**

- Moderate the Steering Team<sup>1</sup>
- Provide servant leadership of the staff to ensure efficient church operation
- Delegate appropriately and conduct regular staff meetings and performance reviews
- Collaborate with the Director of Worship in the selection of psalms, hymns, and spiritual songs, that stir the congregation to worship in spirit and truth
- Build Christ-centered relationships with the ministry leaders to enable strong, unified leadership of New City
- Partner with Steering Team to develop and administer the church budget
- Develop and strengthen church leaders and staff through intentional mentorship
- Grow the staff and volunteer teams as necessary to accommodate church growth and other needs
- Build relationships and collaborative partnerships with the Presbytery, and regularly attend General Assembly

## **Spiritual Development & Discipleship Training**

- Spiritually develop and train men who can become elders and deacons
- Spiritually develop and train current and potential City Group leaders
- Support and encourage discipleship training in various forms
- Equipping/leading congregation in efforts to reach the greater Palm Bay community with the Gospel
- Work with the Steering Team to ensure the City Groups, children's, youth, women's, and men's ministries are aligned with PCA teachings
- Maintain awareness that the teachings of church ministry partners are Biblically aligned

## **Congregational Communication**

- Encourage two-way communication between the congregants and church leaders
- Value congregational input on problem-solving and decision-making

---

<sup>1</sup> See Officers section on [Page 7](#) under Church Profile for explanation of Steering Team

# NEW CITY'S STORY

## Who We Are

New City is a multigenerational reformed congregation that desires to glorify God by making disciples of Jesus Christ, sharing the gospel with the lost, and being involved with missions both locally and globally. We are driven by a desire to see people's lives forever changed through an encounter with God's radical grace in the gospel. We believe that Jesus is making all things new and we seek to see our city made new by the gospel.

## Church History

In the summer of 2019, Pastor Ben Harris and a launch team of committed followers of Jesus began to gather to worship, pray, and share the gospel. Under the leadership of Covenant Church, this launch team became NCC and launched public worship services on October 22, 2019. In the following years, New City would experience continued year-over-year growth in attendance. New City went from renting a room at a regional park to renting our current worship space at Bayside High School. We acquired our current office space in Bayside to facilitate staff as well as small groups and other events. In March 2022, McCartney Diener was hired as the full-time Director of Worship and Communication.

In April 2023, Pastor Ben resigned as New City's Planting Pastor and returned to Covenant as an associate pastor. While this announcement was a blow to the congregation and some chose to leave, many within the flock were ready to continue the ministry that the Lord was doing through Ben. Though the following months have been challenging, God has still been faithful to His church. Covenant's session and New City's Steering Team hired Jon Storck for the role of Interim Pastor in October of 2023.

## Worship Style

New City has a blended service with a balance of hymns (both historic and modern) and praise music. Our service tends to be somewhat informal with acoustic arrangements of our songs. Our children participate in corporate worship before they are dismissed to age-specific classes and lessons.



### Example Order of Worship:

- Welcome/Call to Worship (scriptural)
- 3 songs
- Offering/Announcements
- Children's blessing and dismissal to children's discipleship (City Kids)

- Greeting/Intermission (refreshments are served)
- Congregational Prayer
- Sermon
- Closing Song
- Benediction

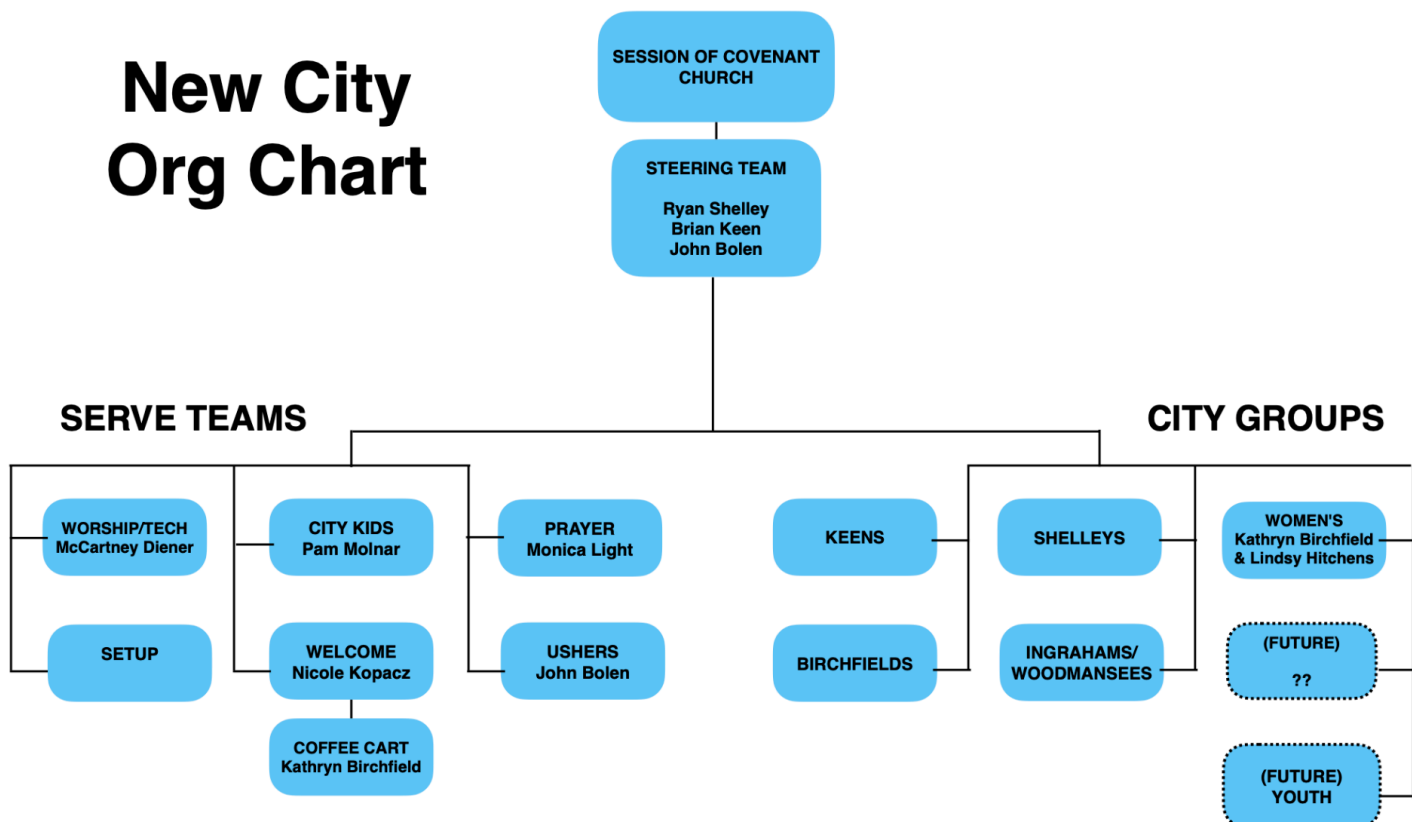
*We celebrate the Lord's Supper on the first Sunday of each month*

### Staff

1. Jon Storck: Interim Pastor
  - a. Started working at New City in November 2023
2. McCartney Diener: Director of Worship and Communication
  - a. Started working at New City on March 1, 2022

### Officers

1. New City currently has no elders or deacons. We are a non-particularized church in the Central Florida Presbytery of the Presbyterian Church of America.
2. The Steering Team, comprised of New City members, functions as the local governing board of NCC and is under the authority of the Session of Covenant Church. The Steering Team includes Brian Keen, John Bolen, Ryan Shelley, and Jon Storck (moderator)
3. See the organizational chart below:



## Opportunities for Growth

We are grateful for where God has brought us, and we also humbly acknowledge some gaps between where we want to be and where we currently are. We desire to strengthen and mature in these specific ministry areas:

- More small-group discipleship
- Outreach (evangelism)
- Prayer ministry (intentional engagement)
- Cross-generational ministry
- Interactional fellowship
- Men's ministry/discipleship





# NEW CITY'S COMMITMENTS (What We Believe)

## **A. Vision**

To see our city made new by the gospel.

## **B. Mission**

To glorify God by being and making disciples of Jesus Christ.

## **C. Values**

1. Proclaiming Grace: It's all about the good news of the gospel (1 Cor. 15:3-11)
2. Praying Dependently: It's all about asking for God's plan and power (John 17:1, 9, 20-21)
3. Living Sacrificially: It's all about living for Jesus (Rom. 12:1-2)
4. Growing Community: It's all about growing up together with God's family (Acts 2:42-47)
5. Renewing Family: It's all about loving and leading the family (Deut. 6:4-7)
6. Multiplying Disciples: It's all about making more followers of Jesus (Matt. 28:18-20)

## **D. Strategies**

1. "Worship together and personally": Join us on Sunday mornings and engage in personal worship
2. "Grow in a group": Connect in a City Group.
3. "Serve the church": Serve on a Serve Team.
4. "Reach the city": Join us in sharing the good news with someone personally.

## **E. Marks**

1. WHEN do I worship God throughout the day and the week?
2. WHERE do I grow with others in Biblical community?
3. HOW am I serving and building up the church?
4. WHO in my life and in my city needs to be reached with the gospel?
5. WHAT do my time, talent, and treasure reveal about my priorities?

# SCOPE OF MINISTRIES, PARTICIPATION & ENGAGEMENT

- Over 90% of adult church members are currently serving in some capacity at NCC

## A. Serve Teams:

1. Setup/Teardown: sets up and cleans up the cafeteria on Sundays
2. Welcome: door greeters, welcome table, new guest follow-up
3. Worship/Tech: sets up tech equipment and leads worship for the congregation
4. City Kids: teaches kids during worship
  - i. Nursery (0-2)
  - ii. Toddlers (3-PreK)
  - iii. Kindergarten - 3rd grade
5. Prayer: a small group that meets on Sunday mornings to pray for the congregation and other local/global requests.

**B. Hospitality:** Offers assistance to individuals/families in need; hospitalized, babies, MealTrains, etc

## C. Membership/Attendance Data

1. Average weekly attendance: 85
2. Small Groups (AKA City Groups):
  - a. Current Total: 5 groups
  - b. Average group size: 12
  - c. % of church participation: 57%
3. Youth Group
  - a. Average 10-12 students attending

## D. Finances

1. Current budget: \$300,000
2. Current cash balance: ~\$466,000

## E. Baptisms

1. Since launching, there have been 11 baptisms
2. Since January 2024, we have baptized 2 adults on their profession of faith. We are thankful to God that even during this transition time, He is still using New City to expand His Kingdom.



## WHERE WE ARE LOCATED



SpaceX NASA Crew-5 Mission (October 5, 2022)

### **Palm Bay, FL – “The Space Coast”**

Palm Bay is a city in Brevard County, Florida, on the state's east central coast. The city's population was 129,234 as of 2022. The Palm Bay-Melbourne area has a total urban population of 539,000. Major employers include:

- Aerospace/Engineering companies
- Government contractors
- Colleges/Universities (Florida Tech, Eastern Florida State College)
- Two major hospitals

Median Income: \$62,500 (2022 census)

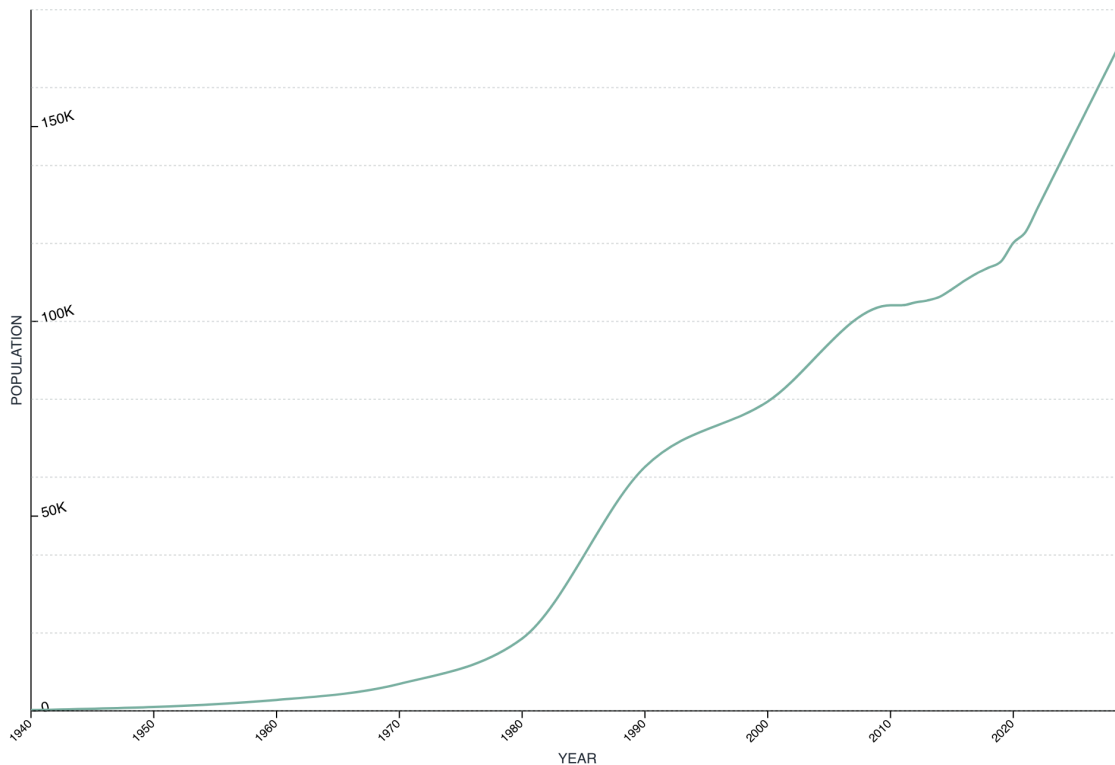
Education: 22% have a bachelor's degree or higher (under the national average)

42,865 households

[Additional Census Information](#)

## Palm Bay, Florida Population 2024

141,798

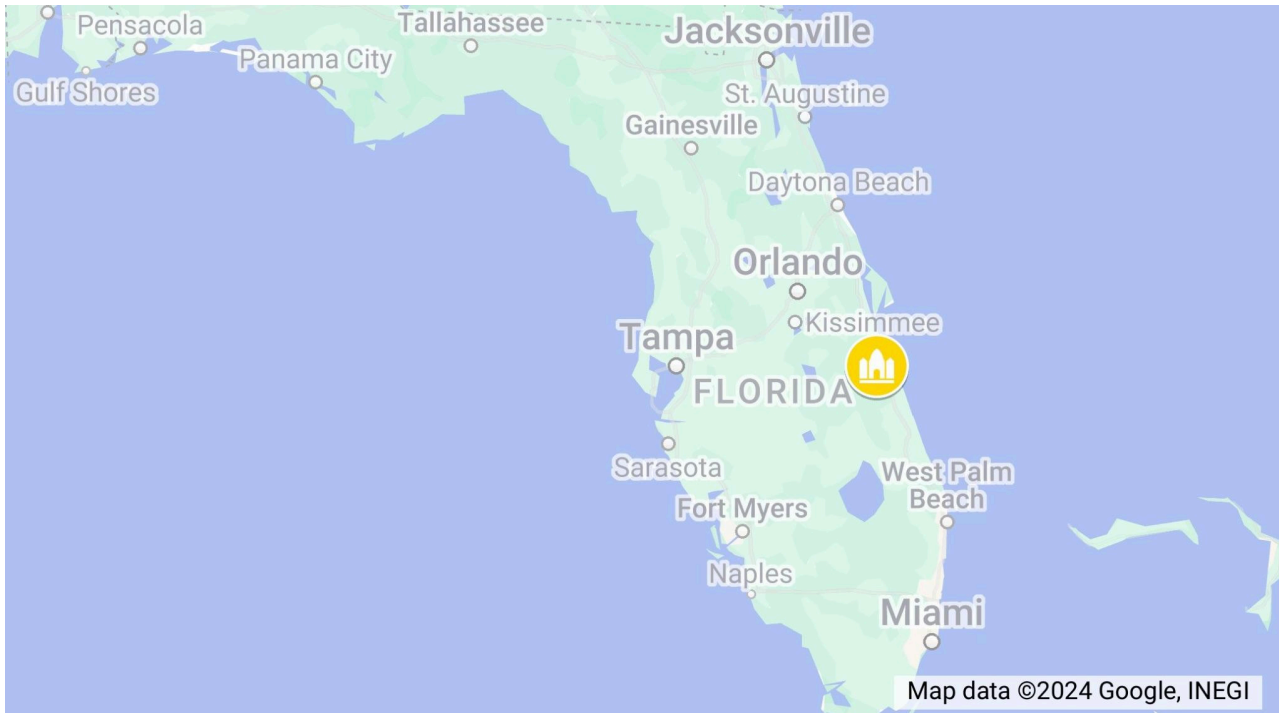


### [Palm Bay, Florida Population 2024](#)

#### Area Schools

- Private/Charter
  - Calvary Chapel Academy (K-12)
  - Pineapple Cove Classical Academy (PreK-12)
  - Odyssey Charter Schools (K-12)
- Public
  - Bayside High (9-12)
  - Christa McAuliffe Elementary (K-6)
  - Columbia Elementary (K-6)
  - Jupiter Elementary (K-6)
  - Heritage High (9-12)
  - Westside Elementary (K-6)
  - Turner Elementary (K-6)
  - Southwest Middle School (7-8)
  - Sunrise Elementary (K-6)
  - Westside Elementary (K-6)

## Geographical Location



### Close by cities:

- Grant-Valkaria, FL: ~8 miles
- West Melbourne, FL: ~10 miles
- Malabar, FL: ~ 11 miles
- Melbourne, FL: ~14 miles
- Melbourne Beach, FL: ~21 miles
- Cocoa Beach, FL: ~35 miles
- Cape Canaveral, FL: ~45 miles
- Orlando, FL: ~78 miles