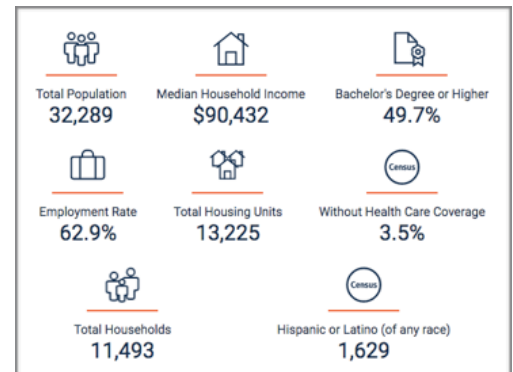


CHURCH PLANT PROFILE

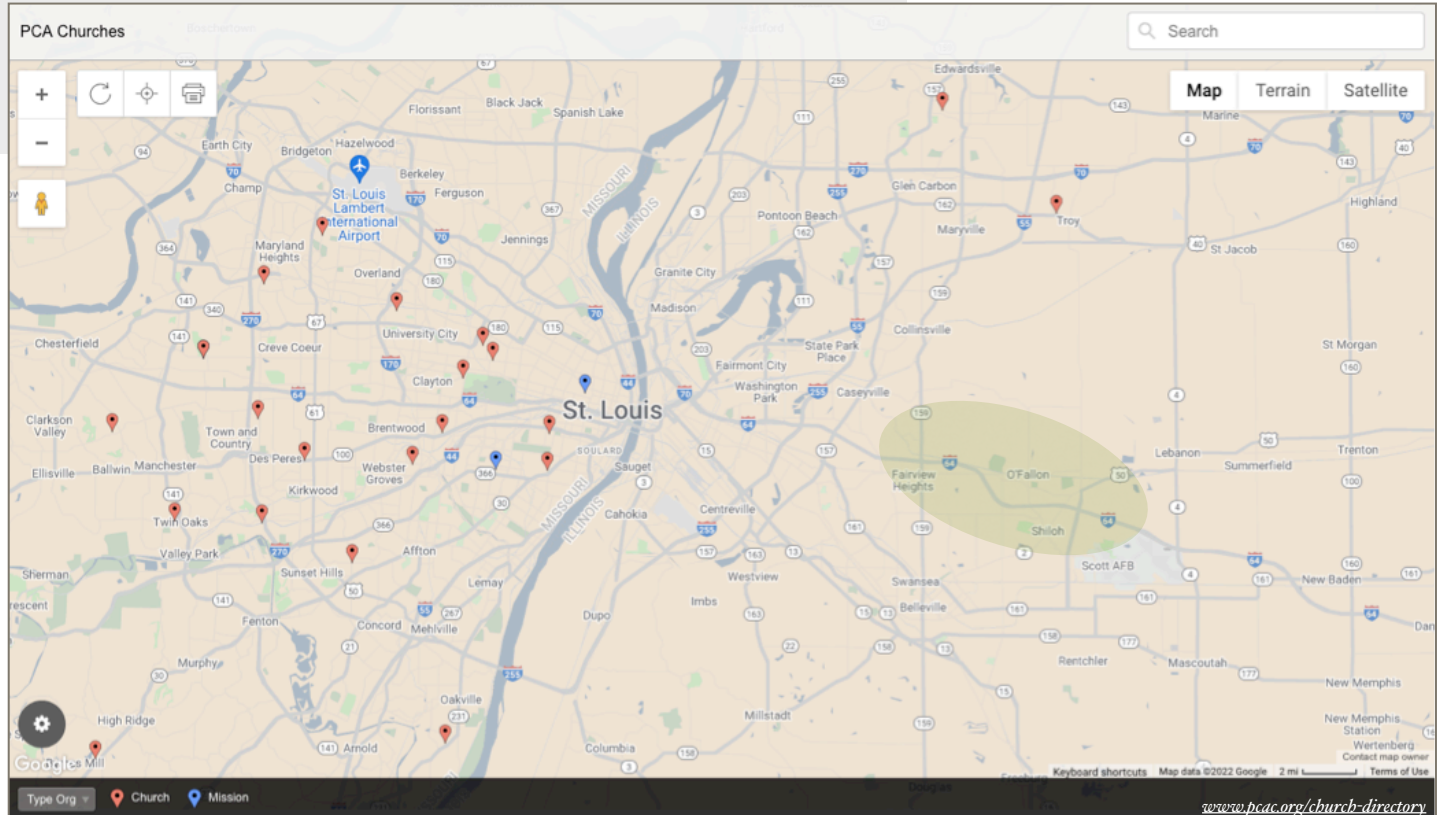
Center Grove Presbyterian Church of Edwardsville, Ill. seeks to plant a church in **O'Fallon**, a city of 32,289 residents in southwestern Illinois, 18 miles east of downtown St. Louis. O'Fallon has evolved from its early rural railroad and mining beginnings in 1854, with the establishment of Scott Air Force Base (1917-present) and development of Interstate 64 (1980-1990) to its present state as a fast-growing suburban center. The city has prospered with access to great housing, world-class amenities, commerce, and industry.

Why here? Why now?

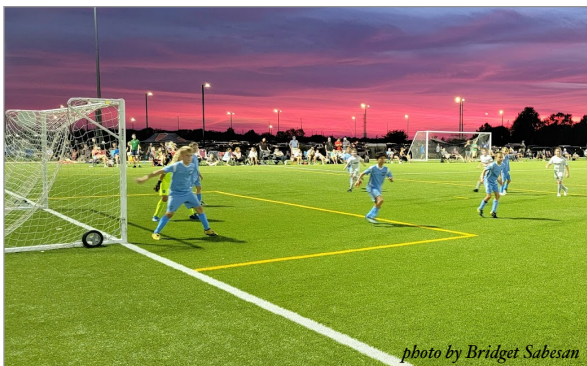
- To be a presence for the lost, helping people find Christ.
- Area ministry research indicates decreasing number of people identifying as religious or Christian (-3.8% over 10 years, vs +3% avg).
- There's a need and opportunity for a reformed church in the area to shepherd and equip God's people to share the good news of Christ.
- O'Fallon is a growing community, with a municipal focus on community involvement, service and growth; welcoming efforts to establish new churches and eager to partner with them.
- Many families move to and from Scott AFB each year, where there are no protestant services at the base chapel.
- To be a home church for individuals and families however long they are here, serving and equipping them to go out and share the gospel.



2020 Census - [census.gov](https://www.census.gov)



There are currently 2 PCA churches (red) in the STL Metro East, compared to 19 churches and 2 missions (blue) in MO. The green oval includes O'Fallon and parts of neighboring communities Shiloh, Scott AFB and Fairview Heights, with a combined population of over 66,000.



About O'Fallon

"Our community is more than a series of highway interchanges. It is more than plots of land and a collection of developments. Of schools. Of parks. And of successful businesses. O'Fallon is all these things. But most of all, the real heart of O'Fallon is its people. People with ideas, big and small. People working on the front lines and behind the scenes, to create a complete community. To build a place people are proud to call home." - O'Fallon, IL Master Plan

Initially founded in 1854, the town gained its name from president of the Ohio and Mississippi Railroad, John O'Fallon, who established a train depot outside St. Louis, naming it O'Fallon Station. Scott Air Force Base was established just southeast of O'Fallon in 1917. The base employs over 15,000 people and provides over \$3 billion in economic impact to Southwest Illinois.

O'Fallon is a family-friendly town with eleven parks and excellent education options for children. The 200 acre sports park is home to many athletic fields, a splash pad, playground and a 2-mile-long walking trail. The parks and recreation department offers activities and varying competition-level sports teams for children and adults. The quality of private and public schools in O'Fallon frequently draws families to the area. The city hosts multiple events and farmers markets throughout the year.

The mother/daughter church plant model...

- ✦ Center Grove Presbyterian Church (CGPC) in Edwardsville seeks to birth a church in O'Fallon.
- ✦ The Church planter would serve as a member of CGPC staff until the plant is particularized and receive support (financial, shepherding, nurturing, care, fellowship) through that relationship.
- ✦ CGPC understands that the birth and raising of a child, (or church in this case) is a commitment that requires resources, perseverance and strength through joy and tribulation and is committed to the growth and development of this church from concept, to plant, to particularization.

We are looking for a church planter who...

- ✦ Loves God with an unquenchable thirst for His Word that overflows in joyful pursuit of the lost and growth of His disciples
- ✦ Desires to work together with the session and members of CGPC to develop and lead a church plant in O'Fallon, IL
- ✦ Is passionate about being part of the community they are in
- ✦ Seeks to establish, build and grow relationships
- ✦ Has a support network or is willing and able to develop one

Things to consider...

- ✦ There are several families already living in O'Fallon who are members of CGPC, and small group already meets weekly.
- ✦ Center Grove PCA been praying about this since 2021 and a committee has been working to prepare for a church planter since January of 2022.
- ✦ Residential mobility is high, with 4.9% of residents having moved from a different state or country in the past year (0.8% national average).
- ✦ The resources and community of Covenant seminary are just over a 30 minute drive from O'Fallon.

Contact us...

- ✦ Email plant@centergrove.org to reach the church plant committee.

