



# ABBOTT Memorial Presbyterian Church

over 130 years of worship & service

**We care about the church.**

warm and welcoming  
multi-generational  
congregation

**We care about our world.**

international ministries in  
Uganda and Ethiopia

**We care about our community**

food distribution, tutoring,  
outreach events, on site  
center for the arts





At Abbott, we care about the church because we believe that Jesus Christ came to rescue and redeem a people for himself and make them into a new community, his church. Abbott is part of that church. We are a worshipping community that exists to celebrate, in word and deed, the gospel of Jesus Christ. We believe that the church is the principal means of growing the Kingdom of God on earth.

We anchor our life together in the historic expressions of the Christian faith known as the Apostles' Creed and the Nicene Creed. In addition, the breadth of church history impacts our priorities, our practices, our mission, and our government. We trace our theological roots to the Reformed branch of Protestantism, outlined in the Belgic Confession (1561), the Heidelberg Catechism (1563), and the Westminster Standards (1646). We are part of the Presbyterian tradition, which provides us with a system of government and accountability. We have been Presbyterian since our founding in 1882 and part of the Presbyterian Church in America since 1982.

Being connected to the PCA means that we are not just a stand-alone church. We have historic connections to a confessional tradition as well as geographic connections with a Presbytery and General Assembly.

# TABLE OF CONTENTS

Community	04
Demographics	06
Abbott History	08
Highlandtown History	10
Congregational Life & Worship	12
Pastoral Search Committee	14
Vision	18
Mission Statement	19
Beliefs	20
Ministries & Missions	22
Current Leadership	24
To Our Future Pastor	26
Application Process	28



# COMMUNITY BALTIMORE, MARYLAND

**Abbott's Highlandtown neighborhood in Baltimore, Maryland is an area of cultural diversity with a deep history of immigrant settlements, survival, opportunity and perseverance.**

## **Read about the current history & demographics of where we live:**

Highlandtown is an Arts District - The Highlandtown Arts District (a.k.a. "HA") is the largest such designated area in the State of Maryland, encompassing the southeast Baltimore neighborhoods of Highlandtown, Patterson Park and portions of the Canton and Greektown neighborhoods. In the Highlandtown Arts District, artists live and work in an area known for cultural diversity. The "HA" district has extensive retail and industrial spaces, along with affordable housing, with easy access to Interstate 95, Interstate 895, Fell's Point and Downtown Baltimore.

Abbott Memorial Presbyterian Church (Abbott Church) located in Baltimore, MD, was first started by the Welsh immigrants that settled in the Highlandtown area of Baltimore City. The church has been on the corner of Bank St. and Highland Ave for over 140 years. Over the 140 years, the surrounding area of Abbott Church has changed, from a mostly European immigrant neighborhood, with multi-generations of these European immigrants remaining in the Highlandtown neighborhood, to what now is perceived as a predominantly Latino, South American neighborhood. However, the Abbott Church 2022 Envisioning Team dove deep into the demographics of the surrounding area and learned that Abbott

Church is uniquely positioned to draw in believers of all races, socioeconomic status, and education levels because of its unique location bordering an area of Baltimore, called Canton. Canton is a middle to upper class neighborhood that is known to be safe, have strong elementary schools and be an attractive area for young professionals. In contrast, Highlandtown has a median household income of \$80K, 27% of the population is Hispanic or Latino and the average household consists of 7.1 people. Abbott Church is uniquely positioned to serve both communities.

In addition, Abbott Church is near the world class institutions of Johns Hopkins Medical School and Hospitals, University of Maryland Medical Center and Peabody Conservatory. The congregation of Abbott draws participants from all these institutions. Abbott is less than two miles from Baltimore's Inner Harbor with M&T Stadium and Oriole Park at Camden Yards, home of the Baltimore Ravens and Orioles.

**Abbott has been on the corner of Bank and Highland Ave for over 140 years**

**We Prepared  
For This.**

**Highlandtown Arts Festival  
Baltimore, Maryland**



# KEY DEMOGRAPHICS

Throughout our research of the demographics of the surrounding area, we learned the following key statistics, within a 1 mile radius of Abbott Church

Median Household Income by Race & Ethnicity	2021
Asian Household Income	\$122,781
Black/African American Household Income	\$47,204
Hispanic/Latino Household Income	\$53,819
White/Anglo Household Income	\$108,312
Pacific Islander, American Indian	\$49,305
Other Household Income	

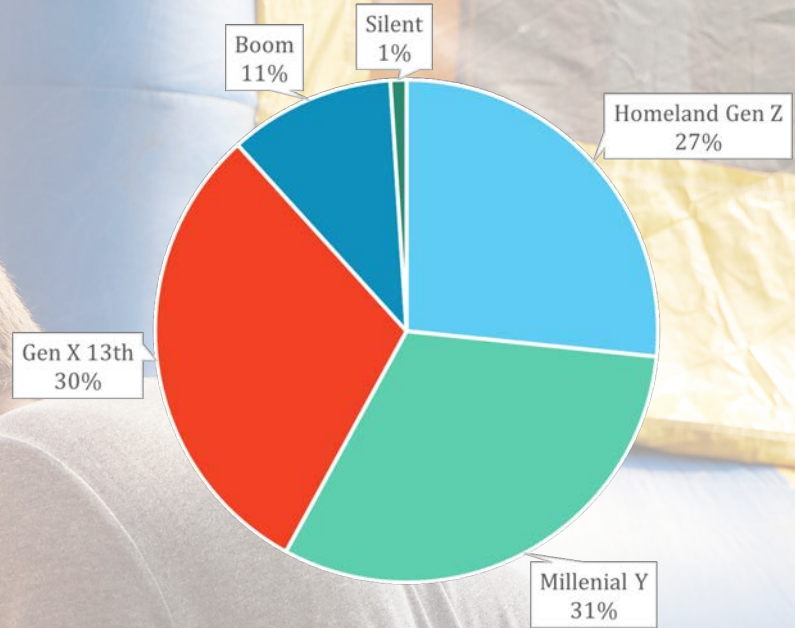
Average Income	\$76,284
----------------	----------

Other relevant information to the neighborhood and surrounding area of Abbott Church from a survey that was conducted regarding ministry preferences would be for individuals living in the surrounding neighborhoods of the church. The highest scoring themes were:

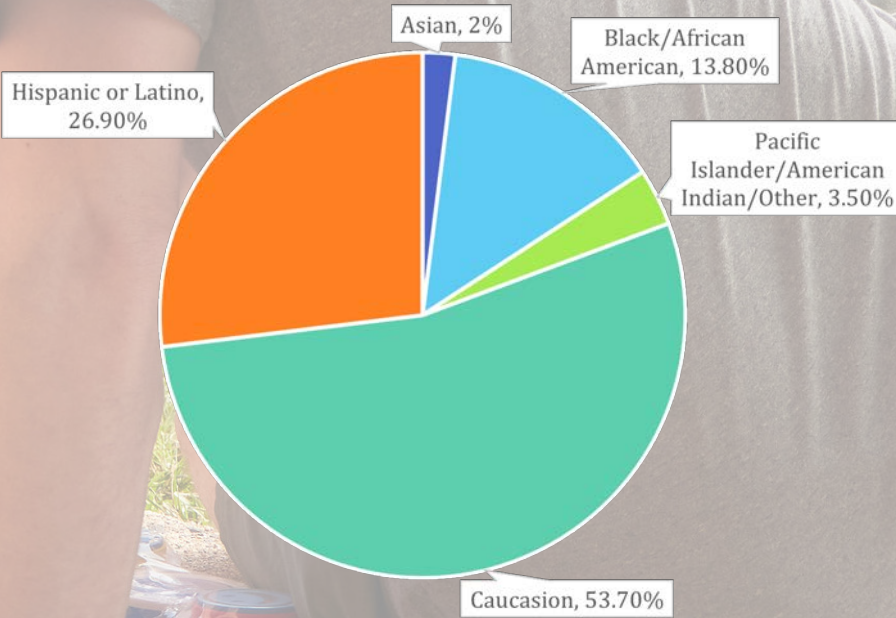
- Warm friendly encounter – 34.5%
- Traditional worship experience – 17%
- Opportunity to develop relationship – 15.4%
- Opportunity to volunteer in the community – 15.6%
- Family oriented activities – 14.3%

“Abbott’s  
Envisioning  
Team analyzed  
strengths &  
challenges,  
finding  
opportunities to  
be of service in  
Highlandtown”

Current Generational Breakdown in our immediate neighborhood were:



Current Year Racial/Ethnic Percentages in our immediate neighborhood were:





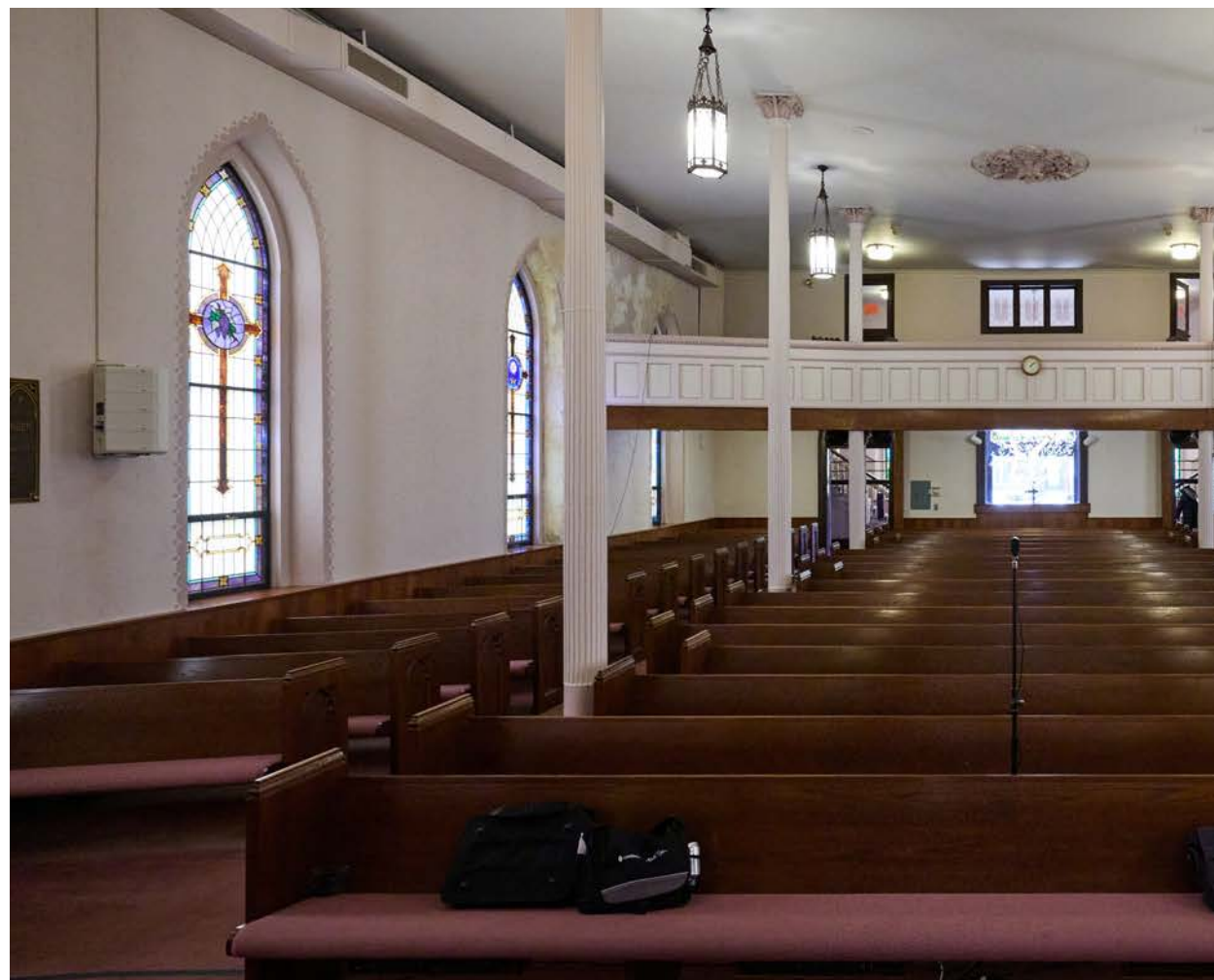
# ABBOTT HISTORY

**Abbott Memorial Presbyterian Church was founded as Abbott Chapel in 1882. It was named after businessman and financier Horace Abbott.**

Abbott was born in Massachusetts in 1806 and moved to Baltimore in 1836 after purchasing the Canton Iron Works in the Canton neighborhood of Baltimore. They specialized in production of steamboat and railroad components. Horace Abbott was also the founder of First National Bank and the Union railroad of Baltimore. He lived at his country estate, Abbotston, near what is now the corner of Alameda and 33rd Street, one of the highest hills in the city.

Horace Abbott was Episcopalian, but many of his workers were Welsh, and he bequeathed money to establish the Abbott Chapel on what is now the corner of Highland Avenue and Bank Street in Highlandtown in 1882. Many of the charter members had been members of the small Toone Street Welsh Presbyterian Church in Canton. Abbott Church called as its first pastor the Rev. J. Wynne Jones. Rev. Jones was born in Wales in 1845. He had served in the Union Army during the Civil War, seeing action in the siege of Vicksburg under General Grant. After his discharge from the Army, he graduated from Princeton Seminary and was ordained a minister in 1876.

Upon his call as Abbott's first pastor, he insisted that worship services be bilingual: Welsh and English. Rev. Jones served as pastor until October 1918 when he died after suffering a heart attack during a street car accident. He



had been on his way to the office of the Mayor of Baltimore to protest the mayor's quarantining of citizens and suspension of worship services during the Spanish influenza epidemic.

Abbott Church grew greatly during Rev. Jones' 36 year tenure as pastor. He was succeeded by another Welsh pastor, Rev. David Hughes who served for eight years until his sudden death at age 45. During Rev. Hughes' tenure, the church built an addition in 1925 which now houses Sunday school rooms and a gym.

Over the next 50 years the church continued to grow numerically and in influence in the community under the leadership of Rev. Rea Martin and Rev. Milton Leininger. During this time there was a great emphasis on evangelism and missions. Also during this time, Sunday evening worship services were added to the already regular Wednesday prayer meeting and Bible studies. Abbott members helped found, and began a relationship with, Mountain View Bible Camp in Manchester, MD.

During the 1960's, it was not unusual for Abbott to have over 500 people in attendance on any given Sunday morning.

In recent decades as the population of Baltimore City has declined from a peak of 950,000 residents in 1950, to less than 600,000 in 2020, so too has Abbott's membership declined as many have taken up residence in the surrounding suburbs.

Since 1982, Abbott Memorial Presbyterian Church has been a member of the Presbyterian Church in America (PCA).

Today, Abbott Church continues to remain faithful to the Scriptures in word and deed.

The We Care Center, a mercy ministry of Abbott, has donated food and clothing to needy neighbors for over 40 years. The Abbott Tutoring program, Music Together program and Community Thanksgiving Dinner are hallmarks of our ministry in Highlandtown.

Because of its location, Abbott Church became known as the "Lighthouse on the Hill." We endeavor to continue to be salt and light among the lost and among our immigrant community, as we were to our immigrant founders nearly 140 years ago.

Soli Deo Gloria!



# HIGHLANDTOWN HISTORY

The Highlandtown Arts District is the largest such designated area in the state of Maryland, encompassing the southeast Baltimore neighborhoods of Highlandtown, Patterson Park and portions of the Canton and Greektown neighborhoods.



The area currently known as Highlandtown was established in 1866, when the area was known as Snake Hill, a village outside the city limits.

In 1870 residents renamed the neighborhood "Highland Town" because of its great view of the city.

Highlandtown was incorporated into Baltimore City in 1919.

Today Highlandtown is bounded by Haven Street to the east, Baltimore Street to the north, Linwood Avenue to the west and Eastern Avenue to the south.

Highlandtown has always been an immigrant community. The original immigrants who were German, Polish, Czech, Italian and Ukrainian have now given way to immigrants from Central and South America, Africa, the Middle East and Southeast Asia.

German restaurants like Eichenkranz and Haussner's have been replaced by restaurants that serve Peruvian chicken, Chinese food and Ethiopian fare, all on the same block!

Another great asset of the Highlandtown neighborhood is the wonderful green space

provided by Patterson Park, named one of the top ten public parks in America by Thrillist.

The basic need of all past and present immigrant groups remains the same: they need Jesus. May Abbott Church resolve to continue to be the Church as a shining light on the Hill; the lighthouse directing the lost to safe harbor—into the loving arms of our Redeemer, Jesus Christ.





# CONGREGATIONAL LIFE & WORSHIP

**Abbott Church is a warm and welcoming, multigenerational congregation. Throughout our long history, our message has never changed. The gospel of Jesus Christ has always been proclaimed from the pulpit and our classrooms.**

We are an important part of the Highlandtown community, having been in the same location for over 140 years. Over the years we have established several ministries for which we are well known in our community. These are the WE CARE Center (twice monthly food and clothing distribution), the Community Thanksgiving Feast (150-200 free meals are distributed), and the Abbott Tutoring Center (students from a neighborhood school are paired up with volunteers for weekly tutoring sessions).

## Strengths

God has blessed us with a wonderful facility, which includes a large sanctuary, a gymnasium, a multi-purpose room with a stage, various classrooms and two kitchens. The church has generously allowed other groups to use our facilities for special events, such as the Salaam Center Christmas party, a homeschool Shakespeare production and a local children's choir.

In addition to the church building, there is also a large three-story manse next door. The basement of the manse consists of office space for the church staff, but the upper three floors are dedicated living space for the pastor and his family.

We also have a very lovely yard and small parking lot (there are about 14 spaces). Our church lawn is the largest green space in the community except for Patterson Park. We often use this space to interact with our neighbors by hosting community events.

## Challenges

We are no longer a large congregation. We have seen a significant drop in church attendance after the COVID pandemic. Also, we lost others after the defrocking of our most recent pastor. Sadly, this included many of our young families, so that we currently have very few children. Most of our active members are older.

Most of our attendees do not live in the Highlandtown neighborhood. That wasn't always the case, but we have struggled to make meaningful connections with our Hispanic neighbors. We recognize the value of new leadership being comfortable in conversational Spanish or desiring to learn the language.

We also recognize that we need more emphasis on personal evangelism. We need to encourage one another to be more mission minded in our jobs, our families and our neighborhoods.



## Worship at Abbott

The service of worship at Abbott employs a liturgical framework of invocation, call to worship, confession of sin, offering, scripture reading, gospel-centered preaching, weekly celebration of the Lord's Supper and benediction. This gives the worship a traditional feel, though the music is pulled from many genres – hymns, gospel, contemporary Christian music – so that it reflects our vision to reach out to our diverse community. We have also begun to sing in Spanish.

Our worship team usually consists of piano, guitar, bass and drums, but is complimented sometimes with auxiliary percussion, bells, mandolin, gospel style organ, accordion, violin and even banjo. It is also important to note that our desire is for the band to accompany and encourage congregational singing rather than to be the focus of worship.

The text of the liturgy and songs are chosen to compliment the theme of the message that is being preached in order to create a thread of continuity throughout the service. That being said, lifting up the majesty of God and celebrating who we are in Christ Jesus and what He has done for us is the foundation of our worship every week.



# OUR PASTORAL SEARCH COMMITTEE



## Barbara Huhn

Barbara Huhn has been a member of Abbott Memorial Presbyterian Church for 5 years. Having been a lifelong Roman Catholic, Barbara became hungry for a church that was Bible-based. At Abbott she found this along with a weekly Bible Study and various religious and social gatherings, thus developing a closer relationship with church hierarchy and members. Barbara heard about Abbott and decided after one visit that she had found what she was searching for.

Barbara is a retired Registered Nurse with a Masters Degree from Johns Hopkins University. She enjoys volunteering wherever there is a need; setting up and clearing the communion table, distributing the elements during service and helping with various church social functions as needed. Barb loves to help with activities at Abbott and does them with an inviting smile.



## Ann Pfeifer

Ann and her husband Jerry are longtime members of Abbott, having met there 50 years ago in the high school youth group. She came to trust Jesus as her Savior through the children's ministries of Abbott and began volunteering in these programs while still in high school.

She went on to graduate from Bible College with an emphasis in Christian Education. She taught children in kindergarten through 6th grade in several Christian schools, while raising her three children and continuing to volunteer at Abbott.

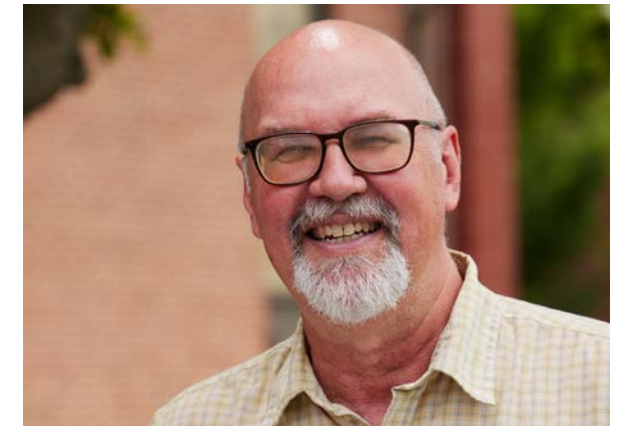
About 10 years ago she stopped teaching full time to pursue other interests. She enjoys teaching Music Together classes, leading the Abbott Tutoring Center, participating in the Thursday morning Bible study, visiting the beach whenever possible, and spending as much time as she can with her 8 grandchildren. Ann and her husband are vital and faithful to Abbott and also are invaluable assets to the church.



## Rajindralal (Raj) Mohan

Raj was born and raised in Trinidad. He was the second of twelve children. His father was a laborer, and his mother was a homemaker. They lived in a grass roof house with dirt floors. When it poured, the rain came through the grass roof. In 1971 Raj came to the United States. He selected Baltimore, Maryland, because he had a friend there with whom he could stay. He received his BS in Accounting, then Raj earned his MBA from Morgan State University; passed the CPA exam; earned his MPA from the University of Baltimore; became a Certified Government Financial Manager and a Chartered Global Management Accountant and also has a Doctor of Theology from Central Christian University. Raj is currently an Adjunct Professor teaching graduate business courses at Morgan State University and accounting at Baltimore City Community College (BCCC).

He accepted Jesus Christ as his Lord and Savior at the age of 13 (formerly Hindu) and continues serving the Lord. He loves God's Word and has taught the Adult Sunday School Class at Abbott. Raj retired from the Federal Government as the Director of Finance and Systems at the Equal Employment Opportunity Commission in Washington DC. Currently, Raj is taking care of his wife as a result of her health.



## George Lenning

George was born and raised in the Highlandtown neighborhood of Baltimore and was baptized at Abbott at 6 weeks of age. He made a profession of faith and became a communing member of Abbott in 1975. His work took him to southern Virginia for 27 years. Divorce left him to single parent two daughters from a young age. The Body of Christ in Virginia was a sustaining force in George's life where he became an Elder.

An ordained deacon and elder for over 25 years, George returned to Baltimore and Abbott to care for his aging mother after retiring from Federal Government employment in 2017.

In addition to loving Jesus and faithfully serving Him, George loves all things German, Native American studies and people in general. And coffee; he loves coffee and engaging other folks with that same love for coffee at local coffee shops.

George has been the key worship leading elder for Abbott, teaches weekly Bible studies and enjoys preaching occasionally.



# OUR PASTORAL SEARCH COMMITTEE



## Julius Fischer Jr.

Julius has served full-time as the Minister of Music since 1999 and has served as an Elder since 2014. Julius and his wife Angela will celebrate their 30th anniversary this November, and they have two daughters, Hannah, who teaches fifth grade in the Baltimore County public school system, and Isabelle who is a tattoo artist. Angela was raised in Greektown, which is the community directly east of Highlandtown, and she teaches Latin at Redeemer Classical Christian School in Kingsville, Maryland.

Before coming to Abbott, Julius was a freelance musician in Baltimore playing everywhere from bars to bar mitzvahs to beauty pageants and taught piano at a local community college. Many would attribute Julius as being one of the most versatile and competent musicians who can easily perform across the cultural spectrums.



## Debbie Halterman

Debbie was born in Baltimore, Maryland and grew up attending Abbott Memorial Presbyterian Church with her identical twin sister (who lives in North Carolina). She received the Lord as her Savior at the age of 10, and has been on one mission trip to Ethiopia, which she considers to be one of her greatest blessings. She and her husband, Larry, married in 1979 have three adult children and six grandchildren, ages 6 to 15, in addition to three dogs and three cats.

Debbie took an early retirement from her work as a health benefits program manager with the Maryland State Government. She now works in the church office one day a week. The rest of the week, she helps care for her mother and father, both age 89, and her husband who has several health conditions. She has enjoyed doing various arts and crafts such as drawing, painting, jewelry making, crocheting, clay molding, mosaics, and sewing. She also enjoys gardening in her "spare" time.



## Ellen Horn

Ellen joined Abbott October 6, 2019. She was a member of a Reformed Presbyterian and Orthodox Presbyterian Church prior to joining Abbott. She bounced around churches searching for a church to call home when she moved to Baltimore. She knew she found her home when she heard the stampede of children running down the sanctuary aisles when they got the call to attend children's church.

The day she joined Abbott her friends and family came from nine states to attend the service.

Ellen retired 7 years ago from Christiana Care Hospital as an L&D nurse. She has 6 children and 11 grandchildren and is planning to move to Minnesota to be with her family. She loves everyone at Abbott and will mostly miss the awesome memories that were made in room 8 with the fellowship meals, Sunday school classes, Thursday Bible study, Session meetings, women's retreat, Thanksgiving meals, leadership classes, and pinning her quilts on the tables. She will always cherish the heartfelt prayers and the love that was felt in that room. She also uses her expertise to help disabled and needy families at Abbott. Her personality is very inviting, and she always gives a helping hand to others with a charming smile and kind words of encouragement.



## Anora Gousse

Anora and her family have been attending Abbott since 2010. She was born a Roman Catholic and stumbled upon Abbott in her search to find a church family. She knew she found a great church when she walked into Abbott as the only black family and was so warmly welcomed. After attending for several years, they decided to become members. Anora assisted with children's church during worship, and her two sons assisted with the sound system and overhead projection during Sunday worship. Her daughter participated in several Christmas musicals.

Anora was born in Trinidad, West Indies and has two brothers and one sister. Her family moved to Brooklyn, New York when she was five years old and she lived there until she moved to Baltimore in 2005 with her husband and three children. Her oldest son, Rasheid, is 34 years old and still resides in New York with his wife and two children. Her second son, AJ, is 26 years old and after graduating, he is working as an HVAC specialist. Her third son, Adam, is 17 years old and will be a senior at Loyola Blakefield High School in fall 2022. Her youngest and only daughter, Autumn, is 15 years old and will be a sophomore at Mercy High School in fall 2022. Her husband of 28 years, Ange, an immigrant from Haiti, owns a construction company which is mainly based out of New York. Anora currently works at Johns Hopkins University Outpatient Center as a medical assistant in the Department of Dermatology.

Anora and her family reside in Catonsville, Maryland and enjoy soca and reggae music which can be attributed to her Caribbean roots. Going out to eat is a favorite pastime; enjoying the park and museums and vacationing are just a few of the things they enjoy.



# What we believe

## Vision Statement



**Abbott Church has stood as a presence and symbol of enduring love on the corner of Highland Ave. and Bank street since 1882. For 140 years, God's people at Abbott Church have loved God, served Him and been faithful to the Gospel through World Wars, economic depressions, economic recessions, pandemics, segregation, crime and a cultural shift away from Christianity. Through it all, the Lord has seen fit to allow this church to be a beacon of hope, proclaiming the Gospel in word and deed to the surrounding community throughout these generations.**

Our vision is to show and share the hope of Jesus Christ with our neighbors regardless of ethnicity, race, class, beliefs and backgrounds. Abbott Church and its members strive to be disciples and missionaries of God to our families, our church, Highlandtown, the nation and the world. By recognizing our shared brokenness and living out the Gospel, we desire to see all people come to know Jesus Christ and experience His saving grace into the family of God, and grow as disciple-makers in His Kingdom.

The ethnic, racial, educational and socio-economic diversity in the community that surrounds Abbott Church is unparalleled in Baltimore. We believe that God desires to show His manifold wisdom to the rulers and authorities in the heavenly realms (Ephesians 3:10) by bringing unity in Christ in the midst of this diversity.

The world's mission field has come to us, as reflected in the many people groups and ethnicities that are surrounding Abbott Church. We want to be a church in Highlandtown that reflects Revelation 7:9 by gathering worshipers from every tribe, people and language, standing before God's throne.

**We will be successful as ambassadors of Christ in Highlandtown and Baltimore by:**

- \* **Building** on our ministry strengths that have made positive impacts in our communities such as We Care Ministry, tutoring for city youth and our community Thanksgiving dinner.
- \* **Partnering** with other ministries within

Highlandtown to serve and meet the community's needs.

\* **Recommitting** ourselves to the discipleship of our children, youth and adults in the knowledge and obedience to the Word of God.

\* **Gathering** in disciple-making, multiplying community groups to reach our local neighborhoods.

\* **Seeking** the Lord for strategic gospel initiatives that are not currently being addressed in the community.

\* **"Washing** the saint's feet" and praying with and for our neighbors; building friendships that reflect the love of God. John 13:1-15; 1 Timothy 5:10

\* **Growing** in our understanding of our personal strengths and spiritual gifts to serve the body of Christ at Abbott and at large.

\* **Equipping** Leaders- to seek out, support and disciple both male and female members to serve as leaders in the church.

\* **Fighting** against the kingdom of darkness in Highlandtown and Baltimore through united, kingdom centered, prevailing prayer. Ephesians 6:10-18

As members of the Body of Christ at Abbott Memorial Church in Highlandtown we will seek to be missionaries and disciples of our Savior. Far from being easy, we understand that this work will be difficult, uncomfortable and sometimes exhausting. However, we know that we can do all things through Christ who strengthens us, and it is our belief that Abbott Church still has a vital place in the work of God's Kingdom in Highlandtown."



# MISSION STATEMENT & BELIEFS

I believe in God, the Father  
almighty, creator of heaven  
and earth ...

## Mission Statement

Abbott Church is committed to Biblical worship, teaching, witnessing and relationships that develop followers of Jesus who, empowered by the Holy Spirit, will faithfully:

**Exalt** Christ as Lord

**Encourage** one another in Christ

**Embrace** our neighbors with the grace and the truth of Christ, in Highlandtown, Baltimore and throughout the world.

## What we believe

We believe that the Bible is God - breathed, authoritative, infallible and inerrant and that Jesus' life, death and resurrection is the central fact of human history.

We believe in The Trinity - We trust in the one triune God, the Holy One of Israel, whom alone we worship and serve.

We believe that Jesus Christ Is God - We trust in Jesus Christ, fully human, fully God.

We believe in justification by grace through faith - Our salvation (justification) through Jesus is God's generous gift to us and not the result of our own accomplishments.

We believe in the sovereignty of God- God is the supreme authority throughout the universe.

We affirm the foundational creeds and beliefs that are common to all Christians and which consistently and harmoniously reflect biblical truth (i.e. The Apostle's Creed, The Nicene Creed).

We acknowledge the wisdom contained within the PCA's constitutional documents which consist of The Westminster Confession of Faith, The Shorter and Larger Catechisms and The PCA Book of Church Order.



# Ministries & Missions Outreach

To know the story of salvation is to know that mission is not just what God does, it's who He is. The Father "so loved the world" that He sent His Son to be the Savior of the world.

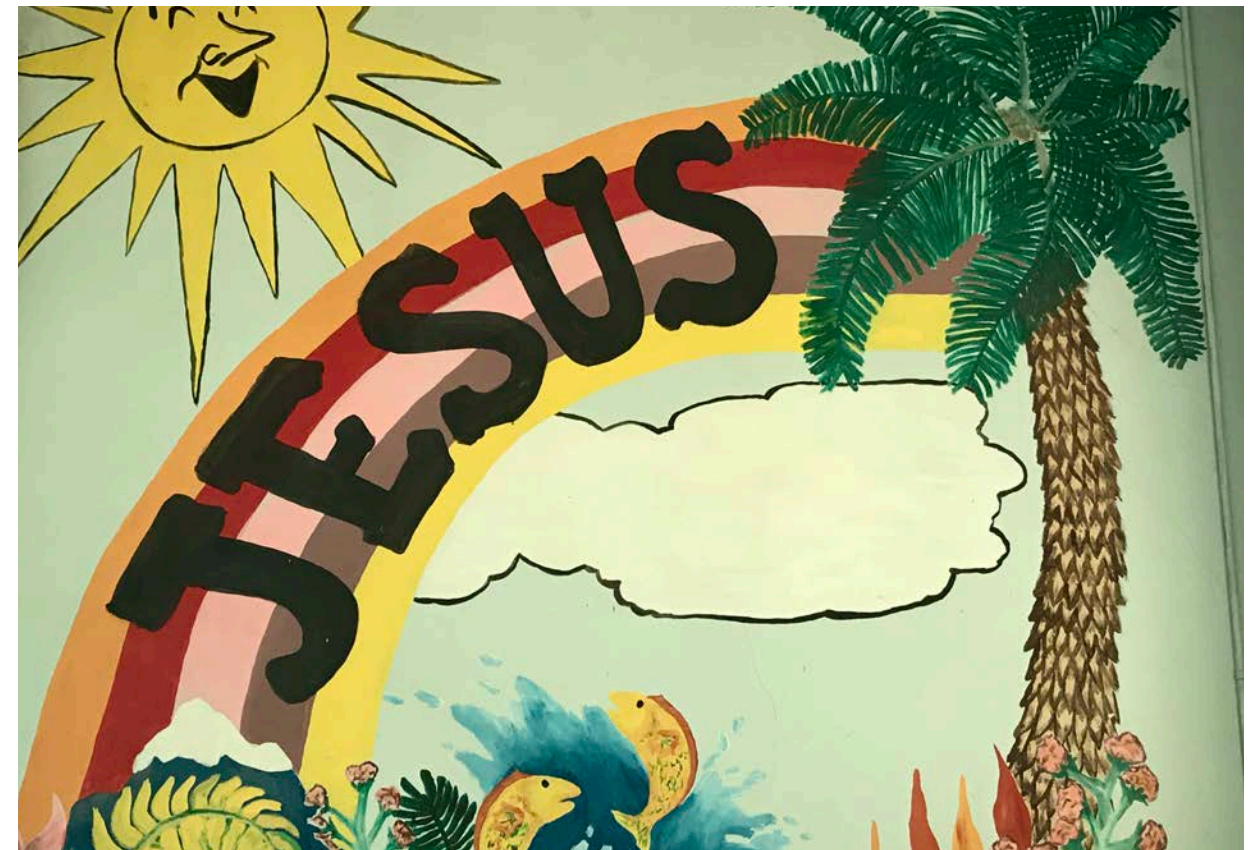


**We Care:** This ministry consists of distributing nonperishable food and clothing to members of our community. It was established over 40 years ago and occurs the first two Saturdays of every month. Anyone can receive help by just coming to the church from 10 am to 12 pm. The ministry is supported by the generosity of the congregation.

**Tutoring:** We have partnered with a local elementary school to match adult tutors with struggling students for weekly tutoring sessions at the church. In addition to a 45 minute one-on-one session, there is also time set aside for play in the gym and a Bible lesson.

**Abbott Center for the Arts:** Julius came to Abbott with a bachelor's degree in Music Education, and he also taught piano at a local community college. Following his passion, the Abbott Center for the Arts was established as both an outreach to the community and as a way to draw musicians who could provide music instruction for members of the congregation. Since its inception in 2004 ACA:

- \* Offers instruction in piano, guitar and violin.
- \* Conducted an exploratory instrumental music class at Hampstead Hill Academy which became a feeder program for their nascent band program.
- \* Offers Music Together, a program that provides music enrichment for families with children from birth to 5 years old. Before COVID, this program registered as many as seventy families a semester who were mostly from the community. The tuition from Music Together has also provided most of the funding for the church music budget.
- \* Hosts the Baltimore Children's Choir to provide rehearsal space for the Highlandtown Chapter of the choir.



## Within the Congregation

**Men's and Women's Ministry:** Over the years there have been retreats and other special events in order to encourage the men and women of Abbott both in their faith and in their friendships with one another. There is also adult Sunday School, Thursday Bible Study, and Wednesday prayer time.

**Children's Ministry:** The teaching and encouragement of our children has always been a priority at Abbott. Sadly, none of these programs are taking place at the present time because most of the families that had young children are no longer attending.

Some of the past programs have been:

- \* Sunday School
- \* Children's Church
- \* Shining Lights (similar to Pioneer Club)
- \* Vacation Bible School
- \* Before COVID, Abbott would conduct an overnight Bible Camp in Manchester, Maryland, that in the early days lasted for an entire week. For over 60 years, the entire camp staff was comprised of volunteers from Abbott and former campers.

## Missions & Ministries we presently support:

- \* Andy & Bev Warren with MTW in Ethiopia (Abbott sent medical missions teams annually beginning in 2004)
- \* Jason & Liz Polk with MTW in Ethiopia
- \* Bert & Nancy Williams with MTW in Uganda
- \* Chris Garriott with RUF at the University of Maryland
- \* Jacob Jasin with RUF-International at Johns Hopkins University
- \* Mountain View Bible Camp



# CURRENT LEADERSHIP STAFF & ELDERS

**Abbott Church has been embracing the gap between pastors as an opportunity for growth and a new way to develop unity**

## Staff

### **Minister of Music: Julius Fischer Jr.**

Julius came to Abbott about 2 years after the former pastor started. The job title, Minister of Music, was an accurate description of the role. Originally, worship at Abbott was traditional, utilizing songs from the Trinity Hymnal and using either piano or organ. When he started to form a worship team, which, at first, was just acoustic guitar and piano, the goal was to create a style that included a blend of both traditional and contemporary music. His role regarding planning worship was to give the pastor ideas for music that would fit the sermon scripture and theme, and the songs would be chosen based on the dozen or so ideas presented. That pastor led the worship and was also the source for most of the new material that was used, and occasionally, Julius wrote new melodies for hymns.

Outside of the tasks regarding worship on Sunday morning, the pastor encouraged "incarnational ministry", and in that sense, Julius functioned as an artist in residence. Through the years, Julius taught piano, founded the Abbott Center for the Arts, mentored young musicians who served on the worship team and camp band, lead the music for the one-week Bible Camp, assembled a group from his professional musician friends and Abbott musicians to present Christmas benefit concerts to support the annual church medical missions trip to Ethiopia and also put together Christmas musicals that the children performed.

At this time, Julius has assumed the role of what some might call a worship pastor. He chooses the music for the service and will sometimes flesh out the liturgical elements like the call to worship, confession and words of encouragement, as well as lead worship. He is working towards having church music incorporate more styles and genres of music that will connect with the diverse community in Highlandtown. He currently oversees the work of the secretary and assists her with any questions she might have.

### **Church Secretary: Deborah Halterman**

Currently, the church secretary is in the office one day a week and performs the following duties:

Weekly tithes and offerings - records amounts by giver for year end statements. Sends budget sheets to the treasurer weekly and Easy Tithe online report monthly. Makes weekly bank deposits. Receives worship information from the Minister of Music and the preacher to prepare and print weekly worship service bulletins; converts to PDF and posts on the church's website. Prepares accompanying worship slides for the big screen. Scans and emails invoices to accountant; prints prepared checks from QuickBooks for payroll and mails invoice payments.



## Elders

In January of 2020, Abbott had six men serving as Ruling Elders. Unfortunately, in Spring 2020 the pastor confessed to scandalous behavior that had occurred in 1983 while he served as a youth intern in another state. Many discussions, investigations and decisions followed involving two congregations, our presbyteries and also an independent investigation agency. These unfortunately resulted in our losing 4 of the 6 elders and eventually the pastor's resignation in the winter of 2021. He was formally demitted from the ministry in February of 2021. This left the current Session, Julius Fischer Jr. and George Lenning, serving as Elders.

George and Julius have assumed many shepherding and leadership duties, and George is also preaching on a monthly basis. Both men and women have been serving alongside the Elders in a non-ordained manner, giving much needed wisdom and perspective. The Session has also been undergirded and assisted by Karl

Dortzbach and an amazing team of ministers – Craig Garriott, Stan Long, Dr. Ben Taylor – from the Baltimore Antioch Leadership Movement. They have carried the church through the process of healing, have been our advocates in presbytery and guided us in a process of envisioning that has brought us to where we are today.

## Deacons

Diaconal Ministries has been strongly supported by the congregation as evidenced by the current balance of the Deacons Fund. In the same way that the leadership of the Session has been affected by recent events, the Diaconate has likewise been affected. There are no ordained Deacons that are currently serving, the ministries are being sustained by a Deaconess and a few volunteers.



# Our future Pastor(s) role & attributes

If one can choose ideal traits and beliefs, we'd like someone who...

## After many discussions, the team has composed an ideal potrait of the candidate for Abbott's future Pastor

Robert Murray McCheyne has said, "My people's greatest need is my personal holiness." This is a primary quality of any candidate for Abbott. Also, we are convinced that nothing of any substantive value in the Kingdom of God will happen outside of Kingdom-centered, prevailing prayer. His character and dependent relationship with the Lord in prayer are the foundation for the ministry of the Holy Scriptures, shepherding and discipling ministry in the church. In addition, he needs to be one who nurtures and fosters a congregation who see themselves as dependent on prayer.

We no longer live in a time when people find themselves in a church outside of an invitation or personal contact with Christians, so we are looking for someone with experience in urban ministry, who views himself as a disciple-maker and teaches the congregation to view themselves as missionaries. He should focus on the church as a congregation of disciple-making community groups where every member is known and nurtured as disciple-makers.

It is one thing to plant a church and another thing to come into an established church with its assets and baggage that needs to be replanted. We need a candidate who affirms the exponential value of the team and shares ministry with other leaders. With this, he should be gifted in encouraging, mentoring, training future leaders and leading teams.

We were a church with an average weekly attendance of around eighty people before COVID and losing our pastor. Currently, weekly attendance is closer to thirty. We are looking for a pastor who, if necessary, is open to considering being co-vocational to complement his support needs, while viewing his pastoral calling as his primary mission. Abbott also sees the strength of a complementary pastoral team to share the ministry.

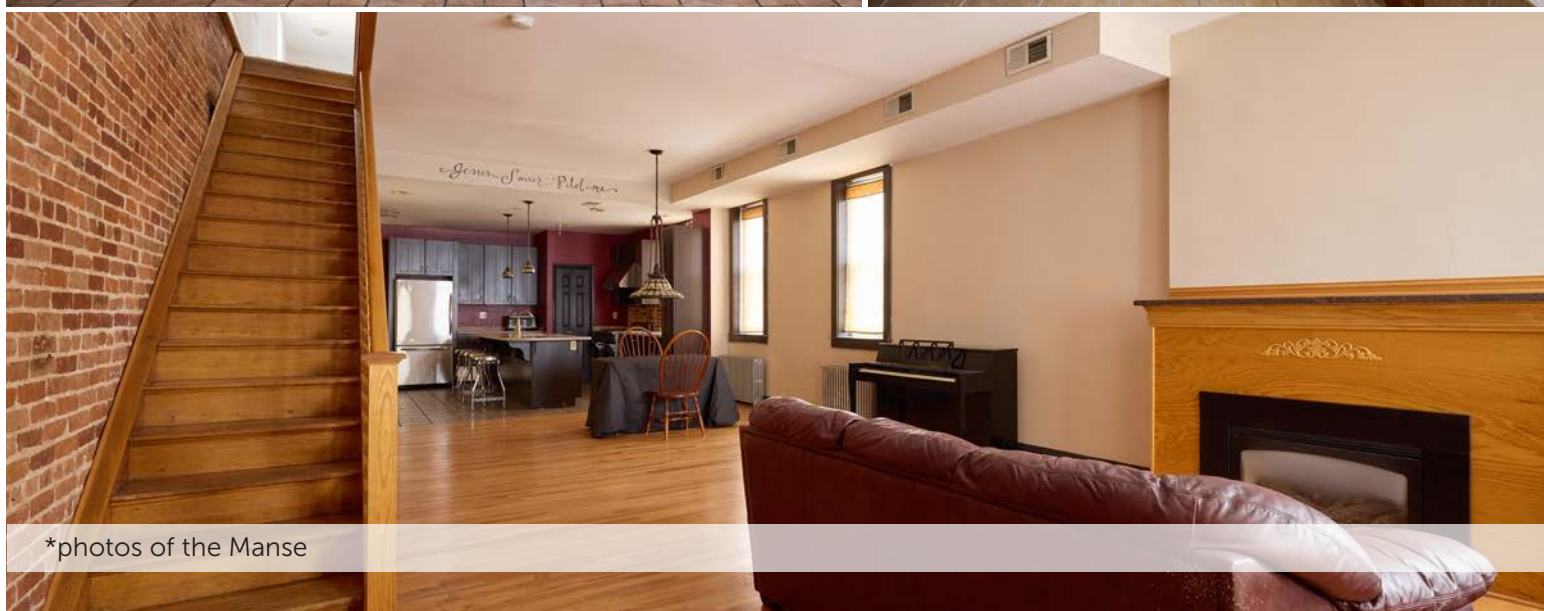
We are seeking a candidate who is able to effectively lead a congregation and preach the grace and truth of God's word with passion from the pulpit; who loves God's Word and is able to teach it joyfully and can easily apply practical truths from Scripture that will help grow the congregation in their walk with Jesus.

As we stated in our vision statement, Highlandtown is a community whose diversity is unparalleled in Baltimore. We feel that Jesus is calling His church to reflect this diversity, so we are seeking a candidate with cross-cultural competency, who is adept at connecting with people in the community.

At 26%, the largest non-white demographic of our community is Hispanic. Although it is not essential, it would be beneficial for the pastor to be bilingual (English/Spanish) or have a desire to grow in their knowledge of the language.

We are seeking a pastor with a shepherd's heart who will make sure that congregants emotional and spiritual needs are being met.

If the pastor is married, we affirm that the first ministry priority is to his wife and family



\*photos of the Manse



# HOW TO APPLY: LIST OF REQUIREMENTS, DOCUMENTATION & QUESTIONNAIRE

Thank you for your interest  
in Abbott Memorial Church,  
we look forward to getting to  
know you better!

## Questionnaire

We want to get to know you, your heart, and your life with Christ. In addition to your resume, PCA Ministerial Data Form, and cover letter, please respond in a few sentences to each of the following questions:

- What do you see in this Abbott Church packet that has caught your attention as a possible fit for you?
- Do you have life experience living near or in an urban context and if so, how has it shaped your ministry?
- Do you think you (and your family, if married with children) would be a good cultural fit in Southeast Baltimore City? What concerns, if any, do you have about living in this area?
- Who has mentored you, and what is different about your life as a result of this influence?
- Tell us something about your life and ministry that would help us understand you, including some information about your family.
- What are your interests and hobbies outside of ministry?

## Application Requirements

If you are interested in learning more about the Pastor role or would like to provide your information for consideration, please send copies of the following documents in PDF format to **AbbottChurchOffice@gmail.com**

- Cover Letter
- Resume
- PCA Ministerial Data Form
- Completed, typed out responses to the questionnaire

Please use the following format to label all attachments:

Firstname Lastname\_Resume. Examples:

"JohnSmith\_CoverLetter"  
"JohnSmith\_Resume"  
"JohnSmith\_MDF"  
"JohnSmith\_Questionnaire"

We are looking to begin receiving documents from applicants as soon as July. We will indicate by email whether you will be interviewed within 2 to 3 weeks from receipt of your 4 application documents.

Thank you for your interest in Abbott Memorial Church. We look forward to getting to know you better and hearing your heart for the Gospel and advancing God's kingdom.











The background image shows the exterior of a red brick church building. On the left, there is a set of concrete steps leading up to an arched entrance, with a black metal railing. The brickwork is a mix of red and tan. To the right, a stone plaque is mounted on the wall, featuring the text '1882 ABBOTT CHAPEL 1982 ABBOTT MEMORIAL' and a map of the chapel's location. The overall scene is a low-angle shot looking up at the building.

## Join us this Sunday at Abbott Memorial Presbyterian Church

We Care: Church. Global.  
Community.

[www.abbottchurch.org](http://www.abbottchurch.org)

### Photo credits

Tracey Brown  
Owner, Paper Camera  
[www.papercamera.com](http://www.papercamera.com)

### Design credits

Marcia Kayhanfar  
Owner, MK design.  
[www.mk-design-studio.com](http://www.mk-design-studio.com)